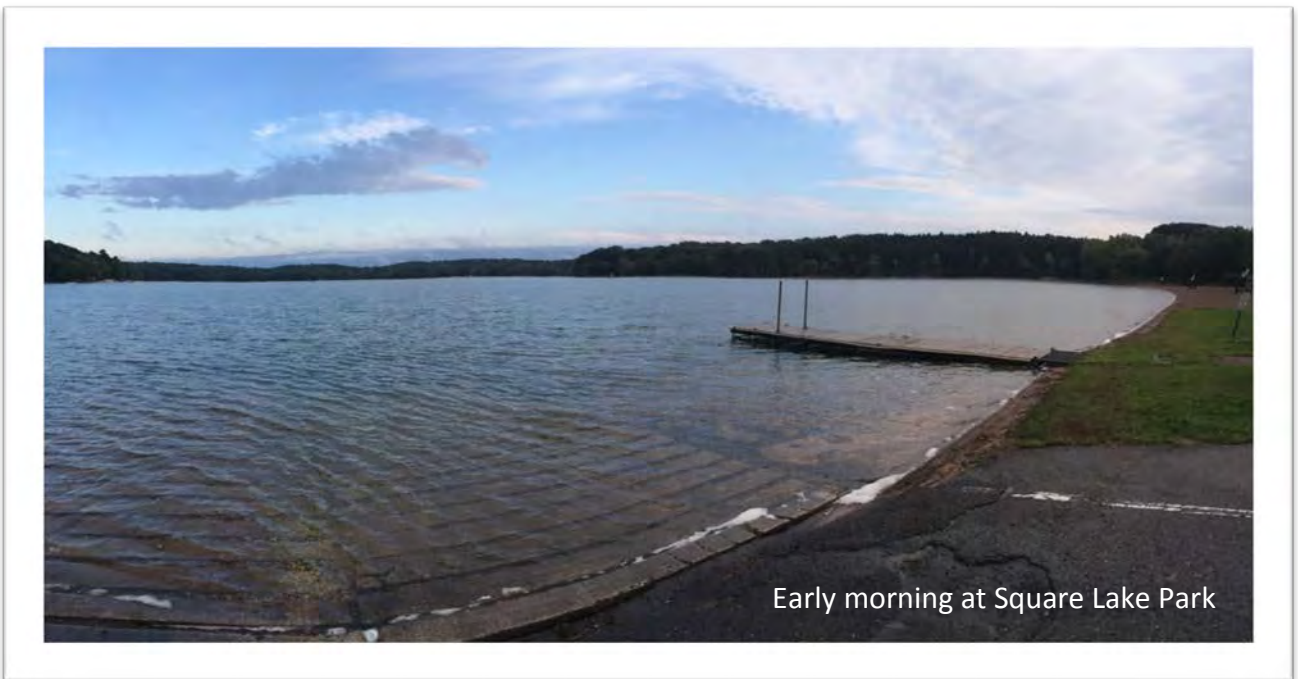


Washington County Parks

Aquatic Invasive Species Prevention Boat Launch Plan



November, 2015



BACKGROUND

In May of 2015, Washington County signed a service agreement with the Washington Conservation District (WCD), allocating a portion of their Aquatic Invasive Species Prevention Aid funds from the State of Minnesota toward developing boat launch plans for the four Washington County Parks with boat launches: Big Marine Park Reserve, Lake Elmo Park Reserve, Square Lake Park, and St. Croix Bluffs Regional Park. Funding was also provided to conduct watercraft inspections at Washington County Parks, update existing regulatory signage and install new, highly visible signs to prompt water users to drain and clean their boats before entering and after exiting the water in order to prevent the spread of Aquatic Invasive Species (AIS).

This boat launch plan, developed jointly by Washington County Parks and the WCD, summarizes AIS prevention activities conducted at Washington County Parks in 2015 and provides recommendations for modifications that could be made to county-owned boat launches in future years, such as marking pavement to designate AIS activity areas, relocating existing compost bins to increase use, installing water sources at high-use launches on infested waters, and potentially making use of mobile decontamination units.

In future years, Washington County Parks and the WCD may expand this plan to address stormwater management at county owned boat launches as well.

Park and lake characteristics:

Big Marine Park Reserve, opened in 2008, includes a boat launch, swimming beach, picnic area and shelter, a large creative playground, and hiking trails on 657 acres of land on the southwest side of Big Marine Lake in northern Washington County. When completed, the park will have 1,800 acres, with 80 percent set aside for preservation and protection. Future park plans include family and group camping and additional miles of hiking and biking trails. The park's boat launch, one of three public launches on Big Marine Lake, has space for 31 boat trailers.

Big Marine Lake is part of the Carnelian-Marine-St. Croix Watershed District and water from the lake drains eventually to the St. Croix River. Water quality and clarity are consistently high and the lake provides excellent fishing, with populations of bluegill, crappie, largemouth bass, northern pike, and walleye. Big Marine is infested with Eurasian watermilfoil and the lake association has conducted herbicide treatments to control the plants' growth in recent years. The watershed district and lake association have conducted numerous aquatic plant surveys and have worked with local experts to evaluate the risk for new aquatic invasive species infestations in Big Marine.

Lake Elmo Park Reserve includes 2,165 acres (3.5 square miles) of land in central Washington County with hiking, skiing and equestrian trails, a manmade swimming pond, individual, group and equestrian camping sites, several park shelters and playgrounds, a new Nordic Center, and a public boat launch. Eighty-percent of the park's land is set aside for preservation and protection. The park's boat launch is the only public access to Lake Elmo. It is situated on the west side of the lake and has space for 20 boat trailers.

Lake Elmo is part of the Valley Branch Watershed District and water from the lake drains eventually to the St. Croix River. Water quality and clarity are consistently high, but the lake is considered difficult to fish due to the very clear and deep water. Lake Elmo is infested with Eurasian watermilfoil and the lake association conducted herbicide treatments to control the plants' growth in 2015.

Square Lake Park has a 950 foot sand beach, fishing pier, and boat launch on 27 acres of land along the east side of Square Lake in northern Washington County. The park is designated as a Regional "Special Recreation Feature" by the Metropolitan Council because of the lake's outstanding water quality. The park's boat launch is the only public launch on Square Lake, though there is a privately owned RV Park adjacent to the park as well.

Square Lake has some of the clearest water in Minnesota and draws scuba divers and swimmers from throughout the Metropolitan Region. It also has no aquatic invasive species. The lake is part of the Carnelian-Marine-St. Croix Watershed District and drains eventually to the St. Croix River.

St. Croix Bluffs Regional Park has 579-acres of rolling upland prairies, wooded ravines, and bluffs along the St. Croix River in southern Washington County, including 3,800 feet of shoreline on the river. The park contains individual and group campgrounds, trails, a picnic shelter and playground, retreat center, fishing pier and boat launch. The boat launch is the only public launch on the St. Croix River south of Interstate 94 and has space for 50 vehicles with trailers.

The St. Croix River is a designated National Wild and Scenic River that offers a wilderness-like experience within easy reach of the Twin Cities metro area. Lake St. Croix (the portion of the river south of Stillwater) is considered impaired for excess phosphorus; however, the St. Croix is in considerably better health than the Mississippi or Minnesota Rivers. The lower St. Croix is infested by Eurasian watermilfoil and, downstream of the St. Croix Boomsite Recreation Area at river mile 25.4, is infested with zebra mussels as well.

ACTIVITIES COMPLETED IN 2015

Watercraft Inspections:

Between June 1 and October 21, 2015, Washington Conservation District Watercraft Inspectors conducted 970 hours of inspections at 17 public boat launches in Washington County, including Big Marine, Lake Elmo, Square Lake and St. Croix Bluffs County Parks. Results from these inspections provide a baseline for evaluating the effectiveness of AIS education activities in the county and also suggest education and prevention needs for future years.

Big Marine Park Reserve: During 2015, 90 inspections were conducted at Big Marine Park Reserve on eight different days. For incoming boats, eight entered the launch area with drain plugs in (Minnesota law requires drain plugs to be out), and two had plants attached to their boat trailers. For outgoing boats, one was prepared to leave the boat launch with the drain plug in, and nine had plants attached to the boat or trailer.

Lake Elmo Park Reserve: 118 inspections were conducted at Lake Elmo Park Reserve on eleven different days. For incoming boats, seven entered the launch area with drain plugs in but none had plants attached. For outgoing boats, two had plants attached.

Square Lake Park: 31 inspections were conducted at Square Lake Park on seven different days. No violations were discovered during any of these inspections.

St. Croix Bluffs Regional Park: Four inspections were conducted at St. Croix Bluffs Regional Park on one day (Minnesota DNR inspectors conducted inspections at this location many other days throughout the summer.) No violations were discovered during these four inspections.

Washington Conservation District recommends that Washington County continue to fund watercraft inspections for public launches, including County Parks. Survey results from 2015 inspections suggest that educational messages and prompts should focus on reminding boaters to remove drain plugs before entering the boat launch and to thoroughly clean and remove attached plants before leaving the launch.

Regulatory signage:

The Minnesota Department of Natural Resources (MN DNR) provides guidance for regulatory signage in their Aquatic Invasive Species Manual (Appendix A). WCD staff completed an inventory of the existing regulatory signs at County Parks boat launches and ordered replacement signs where needed. The updated signs were installed by County Parks staff during the fall.

New entrance and exit signs:

In addition to updating the regulatory signage at Washington County Parks, the WCD developed new, highly visible entrance and exit signs for twelve public launches in Washington County, including the County Parks, to prompt water users to remove drain plugs and clean their boats before entering and after exiting the water. These signs measure 4ft x 3ft in size and are mounted on free-standing sign posts facing incoming and outgoing traffic. The signs were installed in November, after the 2015 boating season, so it is too early to evaluate their impact on boater behavior.



Above: The entrance signs are blue and black. The exit signs are red, yellow and green. The signs measure 4ft wide by 3ft tall.

POTENTIAL ACTIVITIES FOR FUTURE YEARS

AIS Activity Areas:

The MN DNR provides recommendations for boat launch retrofits in the document [Aquatic Invasive Species Best Management Practices for Water Access](#) (Appendix B). One recommendation is to create designated AIS activity areas, either by marking pavement in existing tie-down areas, or by creating new gravel pull-outs so that water users have a place to stop and clean their boats and equipment after exiting the water. Appendices C and D show examples of what these areas might look like. Along with pavement striping, the DNR recommends placing compost bins with signs near the activity areas so that water users have a place to dispose of weeds and bait.

The DNR also encourages boat launch operators to consider providing a water source with a hose at high-use launches on infested waters to make it easier for boaters to rinse equipment

and flush livewells after exiting the water. Big Marine, Lake Elmo, and St. Croix Bluffs are all high use launches on infested water bodies. Square Lake, in contrast, is currently uninfested and is a relatively low-use launch.

The individual park plans on pages 7-10 of this document show where activity areas, compost bins and water sources could be added at each of the four County Parks.



Decontamination Units:

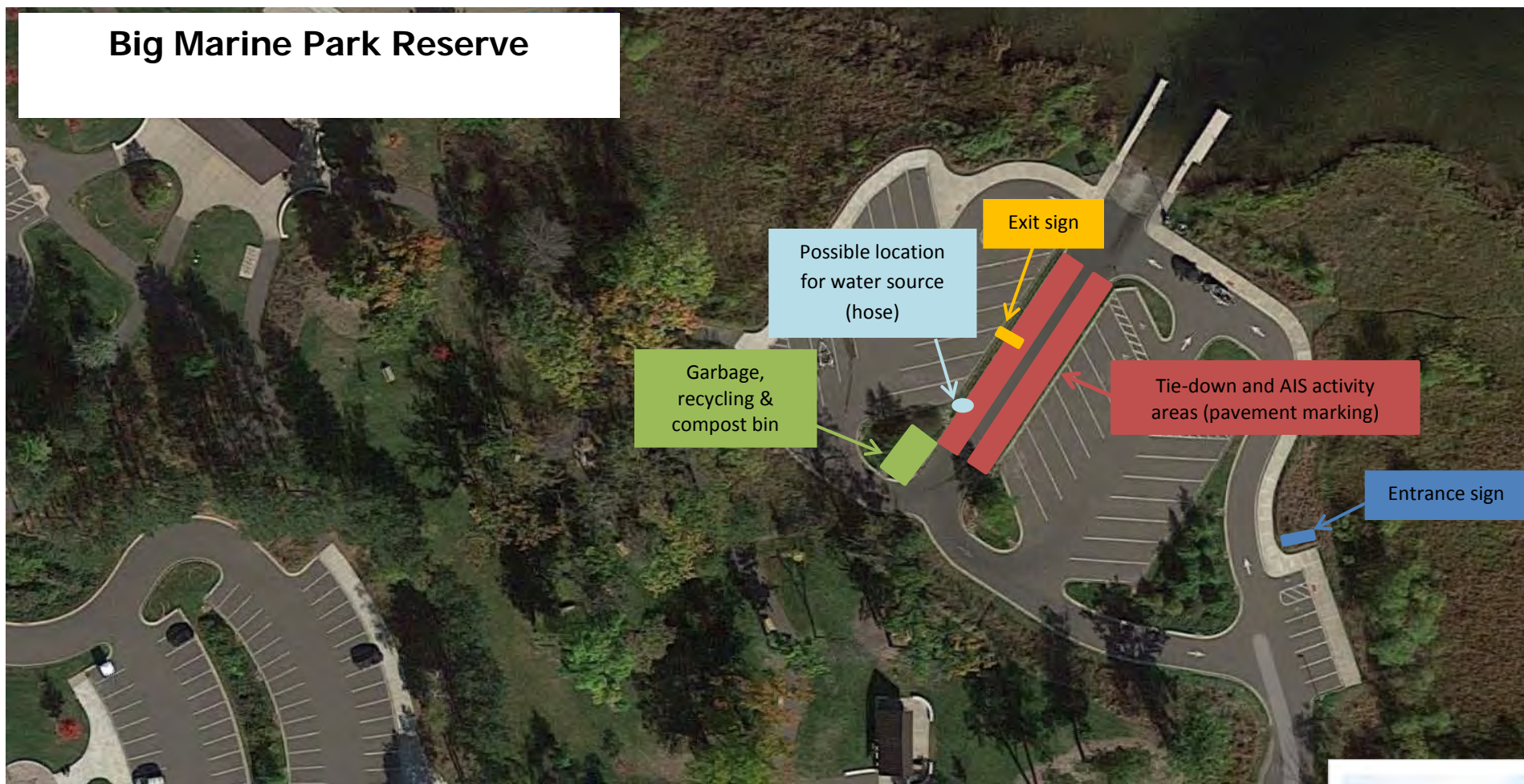
Decontamination units are not currently required by Minnesota Law, but have been shown to be an effective strategy for killing and removing attached adult zebra mussels. During 2015, the MN DNR operated a mobile decontamination unit at St. Croix Bluffs Regional Park during some of their inspection days. The Square Lake Lake Association and Carnelian-Marine – St. Croix Watershed District have expressed an interest in installing a decontamination unit at Square Lake Park, which is uninfested.

Pages 28-30 of Appendix B detail considerations for mobile and permanent decontamination units. Both need to be staffed by trained personnel and require a method for capturing and treating run-off wastewater. Permanent units require a water source and electricity. The MN DNR estimates costs for a portable decontamination unit, including a water recapture system, to be \$12,000-\$20,000 per unit. The cost estimate for a permanent system varies widely based on availability of water and electricity, and could range between \$30,000 and \$200,000 for design, construction, and equipment.

County Park Plans:

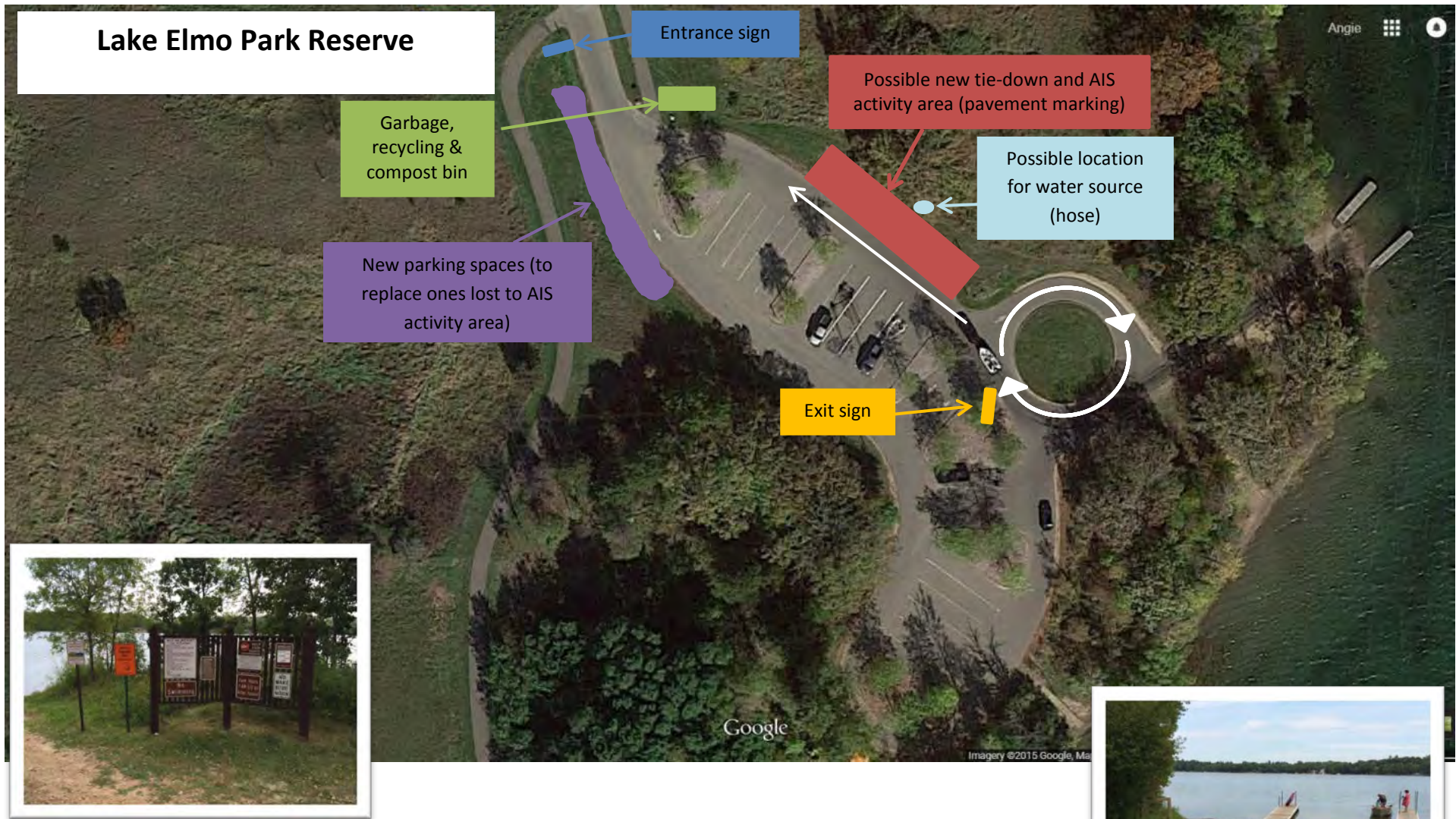
Pages 7-10 of this plan contain images showing potential retrofits for each of the four Washington County Parks.

Big Marine Park Reserve



Above: New, free-standing, large entrance and exit signs have been added to prompt water users to clean and drain their boats before entering and after exiting the water. Additionally, pavement could be marked to designate a space for water users to clean their boats and equipment. A hose could be added in this area to provide a water source for cleaning.

Right: Existing compost bin and recycling containers should be relocated to increase use.



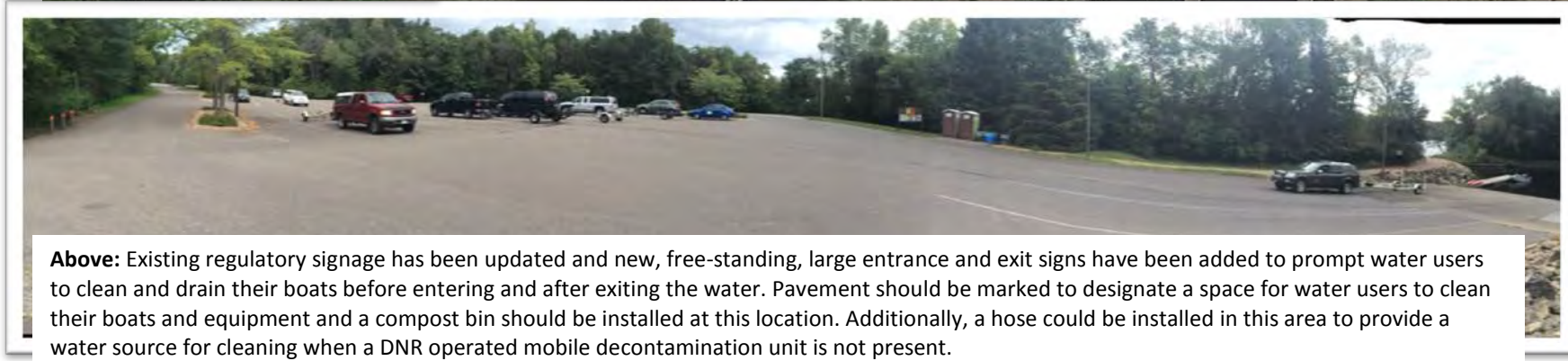
Above: Existing regulatory signage has been updated and new, free-standing, large entrance and exit signs have been added to prompt water users to clean and drain their boats before entering and after exiting the water. Additionally, pavement could be marked to designate a space for water users to clean their boats and equipment. New parking spaces could be created to replace those lost to the AIS activity area.

Right: Existing compost bin should be relocated to increase use.



Above: New, free-standing, large entrance and exit signs have been added to prompt water users to clean and drain their boats before entering and after exiting the water. A mobile decontamination unit could be considered for high-use times. Existing compost bin will be relocated to increase use.

St. Croix Bluffs Regional Park



Above: Existing regulatory signage has been updated and new, free-standing, large entrance and exit signs have been added to prompt water users to clean and drain their boats before entering and after exiting the water. Pavement should be marked to designate a space for water users to clean their boats and equipment and a compost bin should be installed at this location. Additionally, a hose could be installed in this area to provide a water source for cleaning when a DNR operated mobile decontamination unit is not present.



**STOP AQUATIC
HITCHHIKERS!**

Aquatic Invasive Species Sign Manual

November 2014

Minnesota Department of Natural Resources
Division of Ecological and Water Resources
Invasive Species Program
in cooperation with the
Division of Parks and Trails
Public Water Access Program



Introduction

This manual is intended for any public and private water access user. It describes how to obtain aquatic invasive species (AIS) signs, where and how the signs should be posted, which signs are required, and which other signs are available posting.

Common Abbreviations:

AIS – means Aquatic Invasive Species

MN DNR – means Minnesota Department of Natural Resources. The MN DNR has many divisions that own and maintain various land and water accesses throughout Minnesota.

EWR – means Ecological and Water Resources. This is the division of the MN DNR that provides the AIS signs, runs the Watercraft Inspection Program, and answers AIS questions.

PAT – means Parks and Trails. This division maintains DNR owned and operated public water accesses and posts all signs at DNR owned facilities. Assistance with site layout and sign placement is available to access administrators on request

Procedures

1. If you would like HSAH signs to post at a private or public access site, you may request a limited number of signs from EWR or you may print your own signs.

Instructions for requesting or printing your own HSAH signs are at

http://www.dnr.state.mn.us/invasives/ais/prevention/ais_signs.html.

2. Consult the site administrator prior to any digging or postings of signs and arrange to pick up sign from DNR Representative at the closest Area/Regional office.

3. Draft location plan for sign

* **NOTE: ADA requirements:** A person with disabilities should be able to approach within 5 feet of a sign without encountering obstacles.

4. Access sites often have utility lines (electric, water, and sewer) running through them.

Call before you dig!

Gopher one 651-454-0002

Gopherstateonecall.org 800-252-1166

5. Install signs as specified on page 3 within 15 days of accepted application.

Installation and Safety Instructions

Signs and posts can be heavy – use proper lifting techniques and two people when moving or installing. For best safety practices use safety equipment along with the correct material required for the work.

Recommendations:

Metal - U Channel post(s), post pounder, bolts, and washers. Attach sign to posts **after** posts have been installed.

Wood –post(s), hole digger, log screws, washer, drill. Attach sign to post **before** installing posts

Double-post Signs

Materials

- DIMENSIONS x 1/2" slab of plywood for the backing support
- Two DIMENSION posts

Instructions

1. Attach the outward facing sign to plywood and attach plywood to posts before digging.
2. Ensure the sign is facing the proper direction
3. To mark where the post holes should be, lay the sign and posts down and digging the holes to match
4. Tip the sign up into the holes and pack the extra excavated soil down in hole and around posts.

Single-post signs

Materials

- One DIMENSION post

Instructions

1. Attach the outward facing sign to plywood and attach plywood to posts before digging.
2. Ensure the sign is facing the proper direction and dig a hole where sign will be posted
3. Put post in hole and pack the extra excavated soil down in hole and around post.

Standard Signs

The standard size (18" x 24"), Help Aquatic Hitchhikers signs (right) are to be placed at the make ready area and tie down areas of the access. One, two, or three signs may be needed depending upon the layout of the access. Boaters should see the sign as they come in and before they pull out of the lot. This sign should be put on a single post.



You can still place this sign in combination with the larger (3' x 4') sign discussed on page 4. The large sign should replace the standard size sign as described and shown in the examples on page 5.

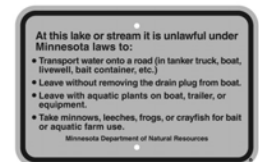
Invasive Species Alert

The orange "Invasive Species Alert" sign is required on infested waters by Minnesota Rule 6216.0300. EWR staff will provide a list of infested waters so that the proper signs can be posted.

The list of infested waters is also available on the DNR website at files.dnr.state.mn.us/eco/invasives/infested_waters.pdf

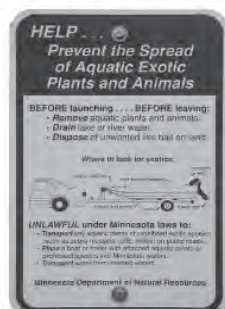


* This pair of orange signs are to be posted at the ramp on their own post - not on the sign board.



Obsolete Signs

All other signs dealing with invasive species should be removed and recycled. "Prevent the Spread of Eurasian Water Milfoil" and other signs with specific invasive species messages along with old "Exotic Species Advisory" shown at below are to be recycled.



Large Stop Aquatic Hitchhikers Sign

A large (3'x4') version of the Help Stop Aquatic Hitchhikers sign is available for use at all types (public and private) of water (public and private) of water accesses throughout the state. There are two companion signs to be placed above the large sign — one is for use at infested waters and one is for use at non-infested waters.

Post these signs as below:

1. **“This is a Designated Infested Water”** – goes above the main sign at the tie down area on lakes and rivers that are infested waters
OR
2. **“Protect this Lake From Aquatic Invasive Species”** – goes above the main sign at make ready areas on non-infested waters.



Reason for large sign

Large “Help Stop Aquatic Hitchhikers” signs are desired at all high-use accesses on designated infested waters.

- Use two posts and a backing board cut to size of sign.
- The large signs should be posted at the exit or tie down area as an additional sign or a replacement for one of the 18x24 size HSAH signs.

* If a standard HSAH sign is removed to install a large HSAH sign, the standard sign should be used at another site or returned to the DNR.

Decal - The EWR can provide decals for the large obsolete Help Stop Aquatic Hitchhikers! sign if it is already posted.

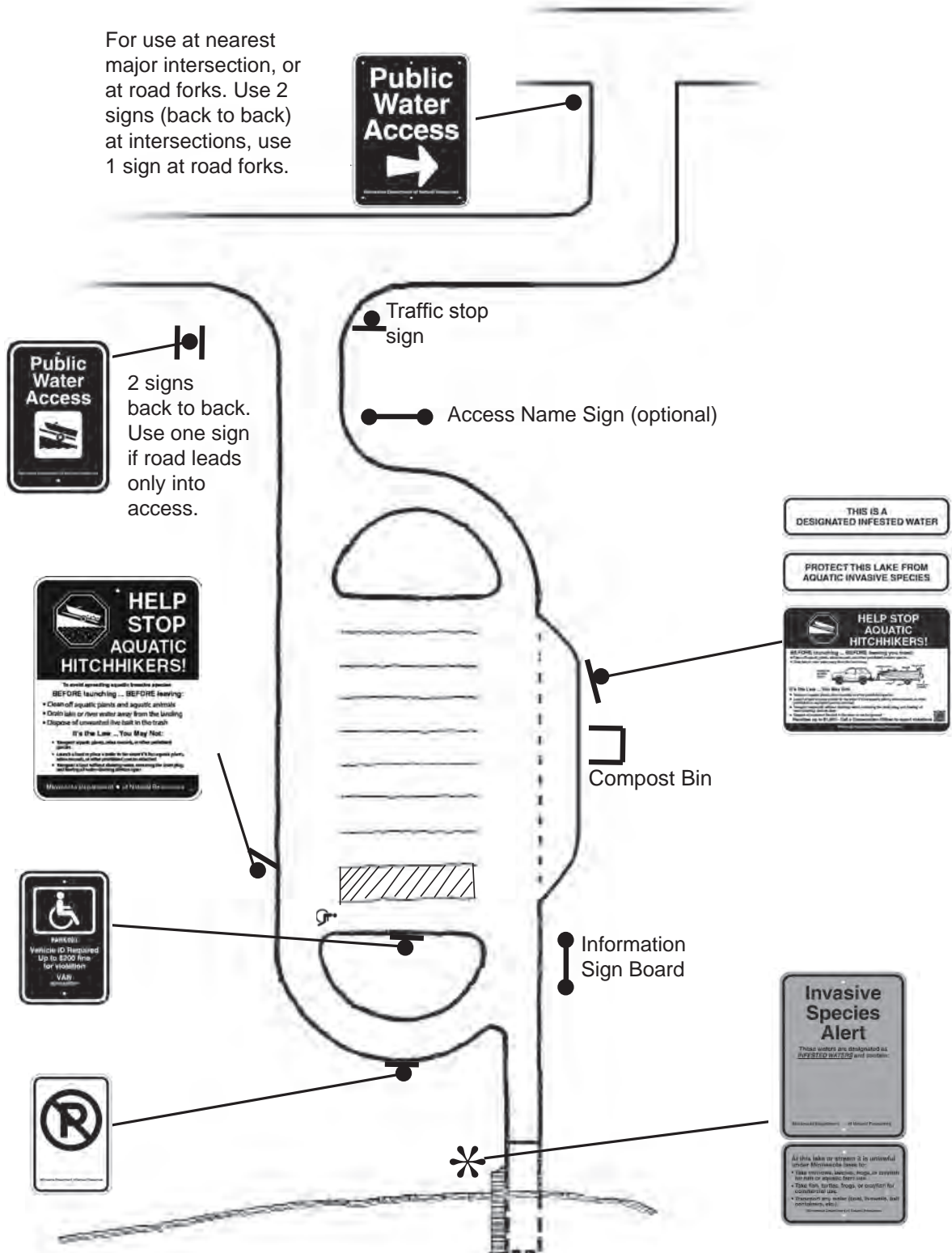


It's the Law ... You May Not:

- Transport aquatic plants, zebra mussels, or other prohibited species
 - Launch a boat or place a trailer in the water if it has aquatic plants, zebra mussels, or other prohibited or regulated species attached
 - Transport watercraft without draining water, removing the drain plug, and leaving all water-draining devices open
 - Dispose of unwanted live bait in the water or on the ground
- Penalties up to \$1,000 - Call a Conservation Officer to report violations**



Access Example



Contact Information

For sign grant questions:

Northwest MN:

**Park Rapids
Fergus Falls**

Northeast MN:

**Grand Rapids
Brainerd**

Central MN:

**St. Paul
St. Cloud**

Southern MN:

**New Ulm
Hutchinson**

For public water access questions:

Public Water Access Program Coordinator: Nancy Stewart

PAT Central Office

651-259-5616

Nancy.Stewart@state.mn.us

Alternative Format Available Upon Request.

Equal opportunity to participate in and benefit from programs of the Minnesota Department of Natural Resources is available to all individuals regardless of race, color, creed, religion, national origin, sex, marital status, public assistance status, age, sexual orientation, disability or activity on behalf of a local human rights commission. Discrimination inquiries should be sent to Minnesota DNR, 500 Lafayette Road, St. Paul, MN 55155-4049; or the Equal Opportunity Office, Department of the Interior, Washington, D.C. 20240.



DNR Information Center
500 Lafayette Road
St. Paul, MN 55155-4040
(651) 296-6157 1-888-MINNDNR (646-6367)
Telecommunication Device for the Deaf
(651) 296-5484 1-800-657-3929
www.dnr.state.mn.us

Minnesota Department of Natural Resources
Division of Parks and Trails

Aquatic Invasive Species Best Management Practices for Water Access



6/26/2012

Table of Contents

Introduction.....	3
Chapter 1: Aquatic Invasive Species Legislation.....	5
Inspections.....	5
Boating.....	6
Chapter 2: Creating AIS Activity Areas.....	8
Chapter 3: Compost Bins.....	10
Benefits and Cost.....	11
Chapter 4: Water Source at Access.....	12
Chapter 5: Stormwater Management.....	15
Stormwater Maintenance BMPs.....	16
Chapter 6: Messaging.....	18
Pavement Stencils and Quick Response Codes.....	18
Aquatic Invasive Species Sign Examples.....	21
Access Site with All BMP's Added.....	24
 <u>Appendix</u>	
A: Boat Wash Facility.....	28
B: Boater Activity Guide.....	31
C: Aquatic Plant Removal Tool.....	35
D: AIS Prevention Ideas for Access Providers.....	38
E: Compost Bin Plans.....	40
F: Stormwater References.....	43
G: Contacts.....	45

Introduction

These Best Management Practices (BMPs) are suggested ways to improve the function of water access sites to address the spread of aquatic invasive species (AIS). In 2010 and 2011 the Minnesota Department of Natural Resources (DNR) held a series of stakeholder meetings to discuss strategies that would increase the DNR's overall efforts to control the spread of AIS. One of the new initiatives suggested was to improve the function of water access sites to better accommodate aquatic invasive species prevention methods required of boaters by law.

Values:

- Stakeholders strongly supported the idea of having designated AIS activity areas at water access sites.
- Stakeholders wanted to see all boaters completing as many AIS prevention activities as possible before leaving the access.
- State statute requires specific AIS activities be complete before leaving the access.

It is the personal responsibility of boat operators to properly complete the AIS actions required in state statute.

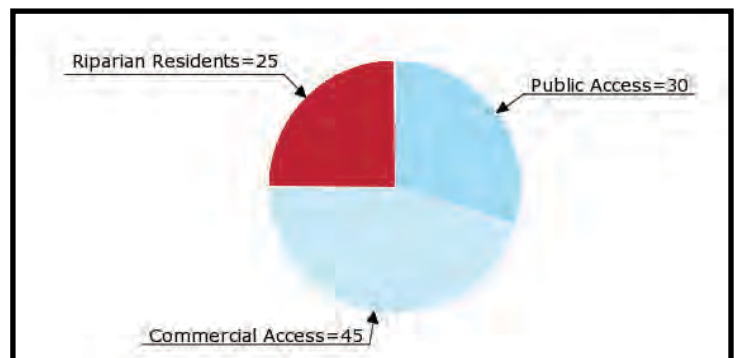
Assumptions:

- The spread of AIS can be prevented if boaters perform the AIS activities required in Minnesota State Statutes.
- It is the personal responsibility of boat operators to properly complete the AIS actions required in state statute.
- Boaters gain access to and leave public waters through three primary means:
 - 1) Public access—free public boat launches and associated parking areas.
 - 2) Commercial access—resorts, campgrounds, marinas, for-fee private accesses and municipal docks provided by lakeshore municipalities for rent by city residents.
 - 3) Riparian residences—waterfront property owners and homeowner associations with riparian access.

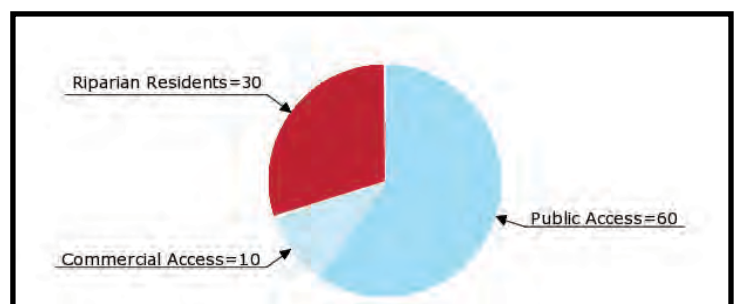
Example 1:

Depending upon the lake, the percentages of boaters using each of the primary means of access vary.

Lake Minnetonka



Twin Cities Lakes (other than Minnetonka)



Source: *Boating in the Twin Cities Metropolitan Area — Status in 2009 and Trends since 1984*

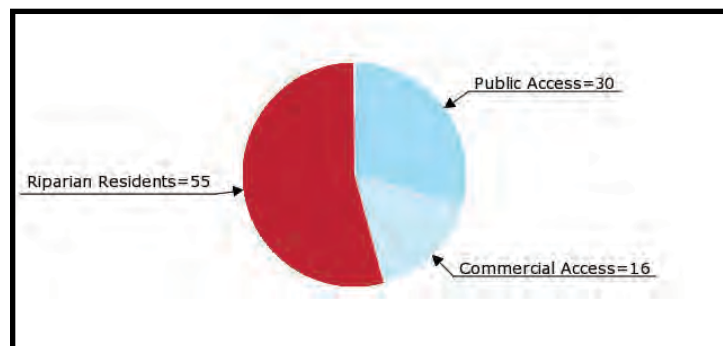
- AIS are harmful to lakes and ecosystems including angling and recreation.
- Boats and other water related equipment are one of the leading vectors for AIS movement.
- A water access site is a place to transition from land to water and vice versa. It is also a parking area. Therefore, people do not spend much time at the public access.
- The average length of a boating trip for users of public access is three to five hours.

Goals

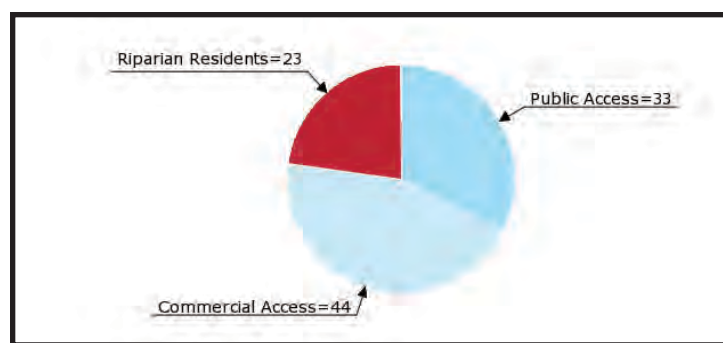
- Create a suite of BMPs that can be shared with all providers of boat access.
- Maintain consistency in the development of AIS activity areas so boaters will benefit.
- Maintain and/or improve safety, increase AIS awareness, and simplify required actions.
- Develop additional tools to supplement Minnesota's invasive species program that includes watercraft inspections, watercraft decontamination, enforcement, and public awareness campaigns.

Example 2:

Lakes other than Mille Lacs



Mille Lacs



Source: *Boating in the North Central Minnesota: Status in 2008 and Trends since 1985*

A water access site is a place to transition from land to water and vice versa. It is also a parking area. Therefore, people do not spend much time at the public access.

Aquatic Invasive Species Prevention Legislation Summary

This is a summary of how the laws related to prevention and management of aquatic invasive species (AIS) applies to boaters and others involved with the transportation of water-related equipment. For further information, consult the Laws of Minnesota 2011, Chapter 84.D.

Definition of water-related equipment

A motor vehicle, boat, watercraft, dock, boat lift, raft, vessel, trailer, tool, implement, device, or any other associated equipment or container, including but not limited to portable bait containers, live wells, ballast tanks (except those with a MPCA permit), bilge areas, and water-hauling equipment that is capable of containing or transporting AIS, aquatic macrophytes (plants), or water.

This definition replaces and expands previous references to watercraft, trailers, plant harvesting equipment, and portable bait containers.



Conservation officer checks for compliance with AIS inspection requirements

Inspections

- Compliance with AIS inspection requirements is an express condition of operating or transporting water-related equipment.
- Conservation Officers or Licensed Peace Officers may set up check stations at or near water access sites.
- Authorized inspectors can visually and tactilely (hands-on) inspect water related equipment.
- Inspections include the removal, drainage, decontamination, or treatment to prevent the transportation and spread of AIS, aquatic macrophytes (plants), and water.
- Protocols for decontamination of water-related equipment will be developed utilizing recommendations outlined in the legislation.



Watercraft Inspector helping boater check for AIS

- Authorized inspectors may prohibit the launching or operation of water-related equipment if a person refuses to allow an inspection or does not remove and dispose of AIS, aquatic macrophytes (plants), and water.
- Refusing to allow an inspection or follow a removal order may result in a civil citation and a one year suspension of the watercraft license.

Boating

- All water-related equipment must be drained before leaving any water access area or riparian property. This includes portable bait containers and live wells.
- Transportation of aquatic macrophytes (plants) on all roads is prohibited except as specifically exempted.
- The legislative changes allow for a civil or criminal citation option for violations involving the transportation of aquatic macrophytes (plants), prohibited invasive species (e.g. zebra mussels), water and non-compliance with drain plug removal.
- Emergency response vehicles and equipment may be transported on a public road with the drain plug or other similar device replaced only after all water has been drained from the equipment upon leaving the water body.



Shore access on Lake Bemidji

AIS Prevention Activities (To be done by boaters at AIS Activity Areas)

Boaters are **required** to complete three main actions before leaving the access or riparian property. The AIS Activity Areas described in the next chapters were developed for these AIS prevention activities that are required in MN State Statute.

1. **Clean off** the boat by removing all **plants, mud, debris and organisms** from the exterior and interior of the boat (including angling equipment and the anchor).
2. **Drain all water** from the boat and other water related equipment, including bait water.
3. **Pull the plug** (it must remain out during transport).

If a watercraft inspector is present, boaters must comply with the inspector's AIS inspection requirements before and after launching, which can include:

1. **Visual** inspection of watercraft and equipment.
2. **Tactile** inspection of watercraft and equipment.
3. **Decontamination** of watercraft and/or equipment.

Failure to complete or comply with any of the above may result in a civil citation.

Before going to another waterbody, boaters should complete one of the following recommended actions. These are not mandatory unless an authorized watercraft inspector or conservation officer has ordered the action.

1. **Dry** the boat and all water related equipment for a minimum of 5 days , or
2. **Wash**/power spray the boat (preferably with hot water) to remove and kill all plants and organisms.

Creating AIS Activity Areas

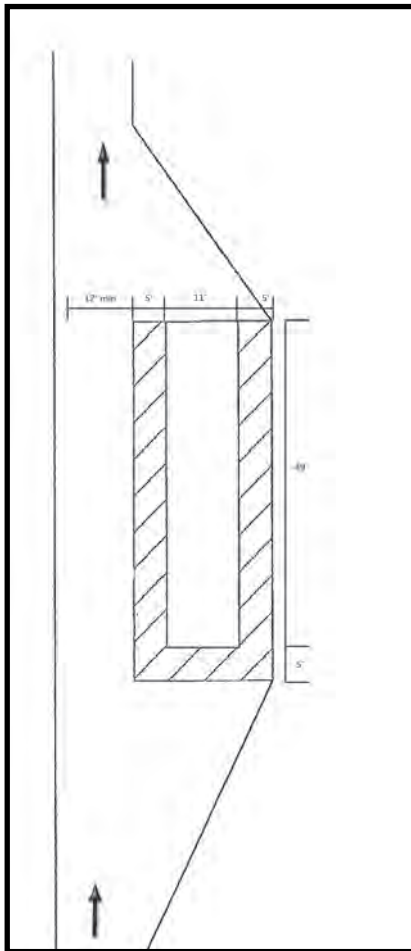
Make Ready and Tie Down Lanes

“Make ready” lanes are designated areas before the ramp where boaters can safely stop and “make” their boat ready to launch. Not all water access sites will have this accommodation. Proper access etiquette states that the launch ramp should not be blocked while boaters get their boats ready to launch. The “Make Ready” lane is typically sloped toward the water body, so it is not a good place to drain water. Boats coming into the access should already be cleaned, drained, and dry. An AIS sign or pavement stencil in this area can serve as a reminder to boaters to ensure they have a clean boat before they launch and that their drain plug is in.

“Tie Down” lanes are designated areas between the ramp and the exit where boaters can safely stop and make sure their boats and equipment are secured and safe to tow on the road. This is the perfect place to create an “AIS Activity Area”.

An “AIS Activity Area” will be a designated space at an access that can contain all, some, or none of the suggested BMPs in these guidelines. The site manager and the size of the space will determine how many of the suggested guidelines can be implemented.

A tie down/AIS activity area should be designed and developed for sites that do not already have a designated area. Access sites with existing tie down lanes can be easily modified with some or all BMPs in this guidebook.



AIS activity area
tie down area with ADA modifications

Total AIS Activity Area

Dimensions:

1. Length: 54'
2. Width: 21'

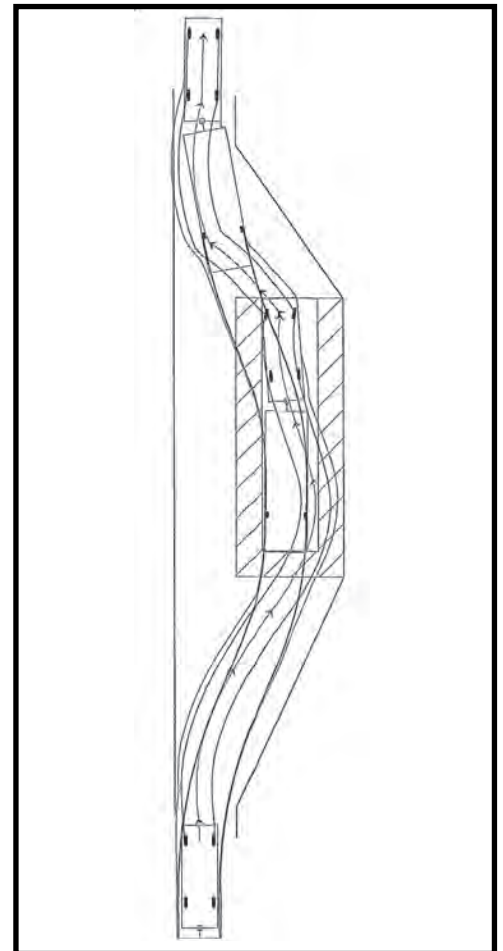
Inner Dimensions:

1. 12' x 46'

To Make This Area ADA Accessible:

1. Walkway Around 3 Sides
2. 5' Wide Minimum for Walkway
3. Maximum 2% Cross Slope

If there is adequate space at the access, a tie down/AIS activity area should be designed and developed for the site.



Typical existing tie down area
shown with AIS activity area added

Benefits of AIS Activity Areas

- Costs are minimal if using existing access “make ready” and “tie down” lanes
- Creates a visible place at the access site for boaters/anglers to complete AIS activities

Concerns

- May be difficult and/or more expensive to place at small sites (less than 10 parking spaces) that do not have defined parking areas and tie down lanes



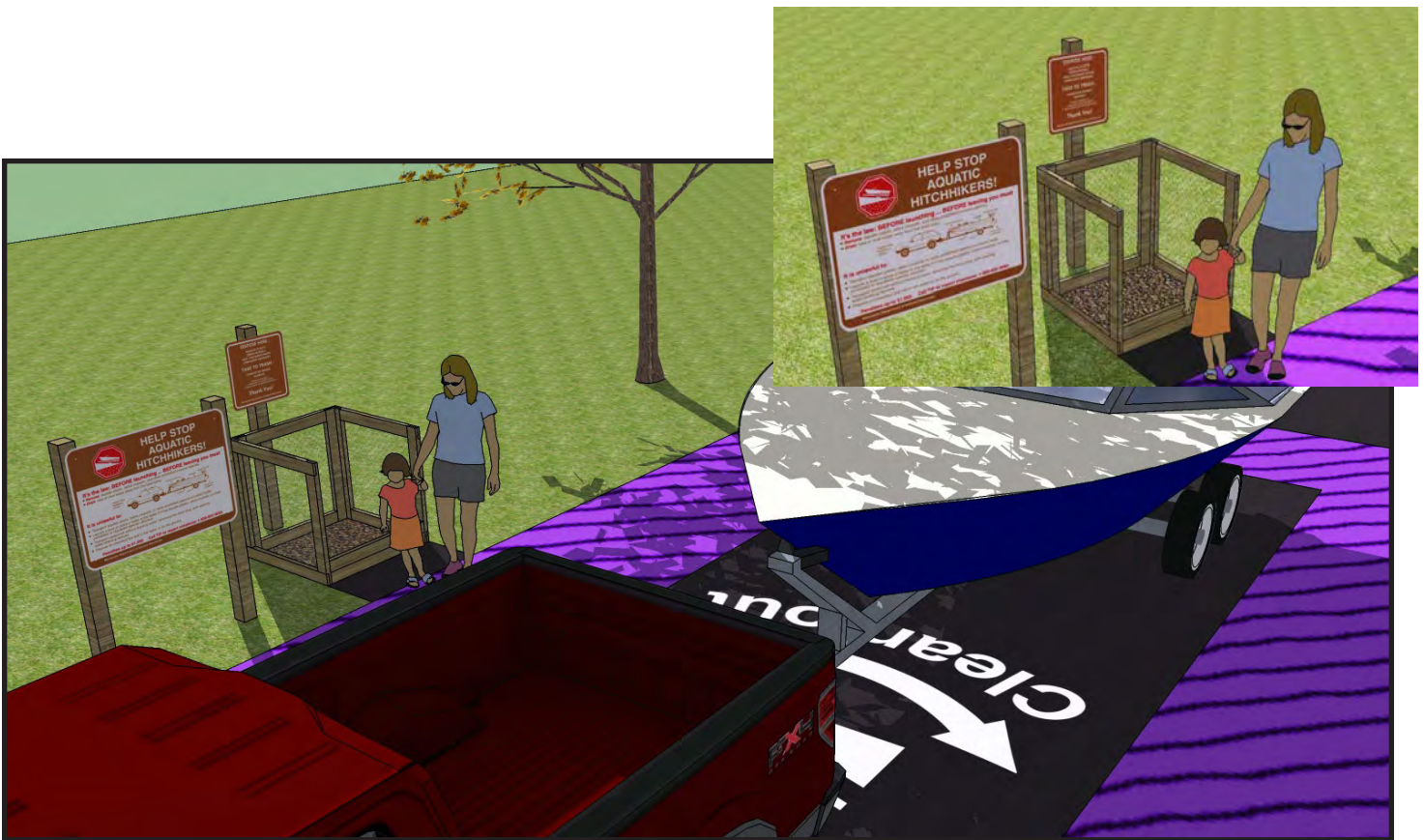
Tie down lane at Leech Lake, Walker, MN

Compost Bins

Purpose of Supplying a Compost Bin

A modified compost bin can be placed at the tie down/AIS activity area of the access site. The compost bin will be a visible reminder for boaters to stop and take time to complete AIS activities. Bins were tried at two sites during the 2010 season. At one site it was working very well, boaters regularly pull up to it after they have retrieved their boat. At another site the bin tended to attract garbage. However, it is a site without a defined tie down/AIS activity area. In both cases, volunteers were checking the bins on a regular basis.

The compost bins are best suited for access sites on lakes infested with Eurasian Water Milfoil (EWM) and Curly Leaf Pondweed (CLP). These sites will have a higher rate of vegetation removal from boats and trailers and other water related equipment. For those without EWM and CLP, a bin may still be a good option for bait water disposal, especially if the main use of the lake is for fishing.



Compost bin at tie down area

The compost bin will be a visible reminder for boaters to stop and take time to complete AIS activities.

Design

A three sided compost bin design is included in this guidebook's appendix. A 3' x 3' x 3' wire and wood design is suggested. The benefits of this design are:

- Looks like a compost bin (not a trash bin)
- Open to the front so it is easy to place plants and clean out
- See through screening makes it easier to monitor for misuse (garbage)
- Durable
- Easy to make
- Relatively inexpensive
- Easy to anchor

A sign should be posted on or near the compost bin stating:

- Place aquatic plants and Zebra Mussels here
- Dispose of unwanted baitfish and bait water here
- Dispose of unwanted worms in trash

Benefits

- Creates a visible place at the access site for boaters/anglers to complete AIS activities
- Best for lakes with Zebra Mussels and vegetation issues such as Eurasian Water Milfoil and Curly Leaf Pondweed
- Creates a place for anglers to dump bait water and aquatic plants and organisms
- Inexpensive, materials cost is approximately \$50 (with sign) per box
- Easy to construct and place at site

Concerns

- Could be misused for garbage or yard compost, especially at remote sites and/or in the spring and fall when sites are not as busy
- Bait dumped in the bin may attract animals, creating potential issues in nearby neighborhoods
- Requires regular monitoring and maintenance. Plants in the bin may need to be spread on site when the bin becomes too full to be effective. Garbage will need to be removed
- May be difficult to find a suitable location at small sites without defined parking areas and tie down lanes
- Theft



Designs for this compost bin are included in Appendix E

Water Sources

Purpose of Supplying Water

Providing a source of water enables boaters to rinse equipment, flush live wells, and possibly save their bait. High pressure hot water has been recommended for killing and removing adult attached Zebra Mussels. However, simply rinsing a watercraft and all related equipment with cold water is effective for removing Zebra Mussel veligers (larva) and spiny water flea, especially from bilges and live wells. After rinsing, drying greatly reduces the likelihood of veliger presence.

The best sites to provide rinse water will have access to municipal water supplies or an existing water source at the access site. Remote sites require a water tank or a well installed, which greatly increases the cost of providing water. Lakes infested with zebra mussels and spiny water flies would be the highest priority. If a water source is provided, stormwater BMPs are imperative.

Bait Management

Type of Bait	Concern	Required Actions
Minnnows and Leeches	Live minnows have a high risk of spreading AIS due to the use of water to transport and keep bait alive.	Drain water from portable bait containers. If you want to save your bait, plan ahead. Bring suitable water along to rinse bait and replace water in portable bait buckets. Do not release live bait into the waterbody. Do not release aquatic animals from one waterbody into another.
Night Crawlers and Angle worms	All earth worms are non-native to Minnesota and have harmful effects on forests.	Keep your worms and reuse them on your next fishing outing. Dispose of unwanted bait in the trash. Please do not dump your worms and/or containers on the ground or in the compost bins, as this is considered littering.



Live shiners



Bait buckets



earthworms

Well Installation

Below is some general information regarding installing a well at an access. When choosing this option, it will be best to talk with local well drillers and licensed contractors, as well as staff from the Minnesota Department of Health (MDH).

The Well Owners Handbook from the website, health.state.mn.us provides good introductory information on wells in general.

MDH-Well Management and Drinking Water Protection Division is required to review all public plans/proposals. Private plans may be required by the the Department of Labor and Industry (DLI) for review. The state-wide plumbing codes that are created by the DLI, regulates these water sources and is available <http://www.dli.mn.gov/main.asp>

- Recognizing whether or not your well will need a back flow prevention device to prevent contamination of the water supply is important. It may not be required depending on the water system. Typically this is not an issue with a hand pump, as there is a check valve located in the pump. However, not all pumps have check valves, and in some instances, not all check valves provide sufficient backflow protection.
- Wells need to meet minimum setback or isolation distances from various contamination sources, which varies by location. A list of these setbacks, including lake setback, can be obtained from MDH.
- All of the information pertaining to marking non-potable pipes is covered under the Plumbing Code. There are no signing requirements associated with buildings, although identifying the source as non-potable is highly recommended.

Some additional things to consider:

- Housing the pump (if electric) for theft protection.
- Flood protection.
- Winterization.
- Additional well regulations can be found in Minnesota Rules Chapter 4725 or on the MDH website, health.state.mn.us click Environmental Health then Drinking Water (Well Mgmt. Program).

Expected Costs

The approximate cost to install a sand point well can vary from \$1,200 to \$2,000 depending on the type of pump (hand or electric) that is installed. These types of wells are most often installed for irrigation.

Benefits

- Provides rinse water on site for equipment
- Supplies replacement water for bait buckets
- Most appropriate for lakes infested with Zebra Mussels and/or Spiny Water Flea
- Best for lakes with a high angling use
- Good for sites of all sizes

Concerns

- Staff time and planning is required for maintenance and to manage installation
- Could be misused for many other things
- Could be vandalized/damaged
- May not be utilized by boaters



Outdoor faucet/city water source



Self service coin-operated boat wash station in Lacrosse, WI

This boat wash station (shown on the left) is a possible option to provide unheated, pressurized water. This particular self-service station is coin-operated, however a timer would provide an automatic shut off without requiring the user to have coins. Even a small fee may discourage some boaters from doing this AIS prevention activity. The installation of this unit was approximately \$25,000.

Stormwater Management

Best Management Practices (BMPs) for stormwater management are an important aspect of the development and planning of public water access sites. Best Management Practices focus on dispersing and diverting run-off away from the body of water and do not allow direct drainage into it.

Stormwater Pollution Prevention Plans (SWPPPs), a requirement of the National Pollutant Discharge Elimination Act (NPDES) for sites larger than 1 acre, are implemented on each development or rehabilitation project regardless of size.

Due to the parameters and uniqueness of each access, sites are designed by engineers and incorporate necessary stormwater practices. Engineers and landscape architects are involved in the specifics of planning, designing, and developing of access sites and all AIS BMPs that are affected by stormwater. Location and design of stormwater BMPs will be influenced by site design and layout. A generic example of a stormwater design plan for an AIS activity area is included in Appendix F.

Regular maintenance of stormwater management systems are paramount if those installations are to be successful over time. The maintenance requirements are discussed below:

- Stormwater management systems divert, contain, and filter run-off effectively
- Site remains clear of aquatic organisms
- Stormwater BMPs are functional and well maintained
- Water at the site does not impair surface or groundwater quality, and is adequately diverted and filtered

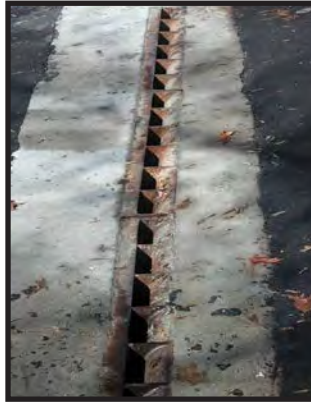


Infiltration swale with native grasses

Examples of Stormwater Management BMPs



Grading of impervious surfaces: allows sheet flow into adjacent vegetation, dispersing run-off away from body of water. This works best in conjunction with maintaining a mowed filter strip around the perimeter of the parking lot.



Trench Drains: intercept rapid run-off vertically or perpendicularly across ramp approaches; used in combination with a swale or basin to receive the run-off; must be cleaned periodically of sediment, leaves, etc. to maintain functionality.



On some sites, it is advantageous to build flat curbs and direct storm water run-off into island swales, dispersing it further. In most instances, it will be necessary to place boulders or posts on the corners to discourage vehicles from driving on to the islands.



Infiltration swale with native plants: temporarily stores storm water run-off allowing it to infiltrate the underlying soil. Infiltrated water can recharge groundwater, be cleansed and discharged through an under drain and evapotranspiration. Soil may have to be replaced if not suitable (clay for instance) for infiltration within 48 to 72 hours. Ideally these swales should be planted with native, moisture-loving plants, to aid in the removal of pollutants. A filter strip should be associated with the swale to allow for easy discharge and catching sediment. Infiltration swales must be maintained and cleared of accumulating sediment and unwanted plant species.



Stormwater ponds: are constructed basins designed to be a permanent pool for extended detention storage, allowing sediment and associated pollutants to settle to the bottom.



Aquatic Invasive Species (AIS) filtration catchment: designed as an infiltration swale next to tie-down area to receive all drained boat water, plants, and animals before the boat leaves the site. Should be mowed, monitored, and cleaned as needed.

Messaging

Pavement Stencils and Quick Response (QR) Codes

Pavement stencils, QR Codes, and other technology-based messaging options should be explored as alternative communication strategies in addition to tradition signs.

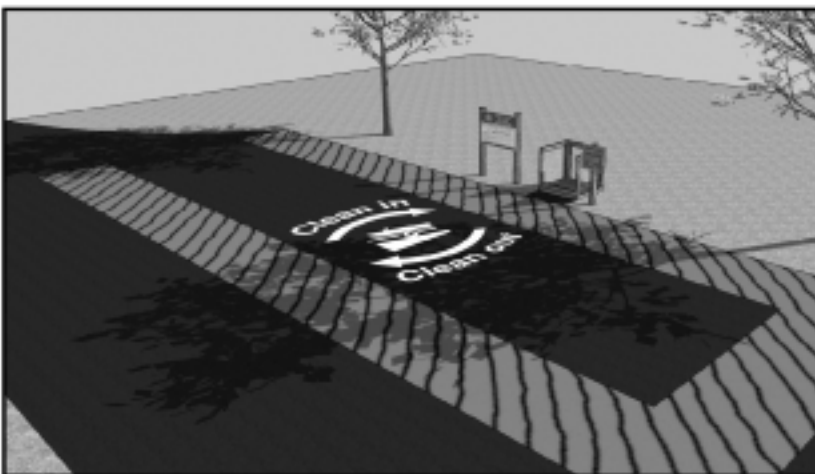
Messages of caution or instruction are often stenciled onto pavement or concrete to quickly and clearly label objects and locations. The key advantage of a stencil is that it can be reproduced cheaply and easily at different sites, making it more cost-effective than signs.

Once developed, the pavement stencil would be used to mark the make-ready areas and/or tie down lanes of access sites with pavement or concrete surfaces.

Digital media also has the appeal of instantaneous web-based information. QR codes could enable users to download a watercraft inspection checklist directly to their smart phones that can be used as they clean and drain their boat or other water-related equipment at the access.



Graphic of AIS activity area



Bird's eye view of AIS activity area



Compost bin sign

MINN 8.2.15.9

Aquatic Invasive Species Signs

This pair of orange invasive species alert signs are to be posted at the ramp on their own post - not on the sign kiosk information/regulation at infested waters only.

The orange “invasive species alert” sign found on the right replaces the “exotic species alert” sign. The “at this lake” sign with 4 bullet points goes below. Invasive species decals are added to the sign to list the specific species found in the water body.

All other signs dealing with invasive species should be removed and recycled by the site manager or designee. “prevent the spread of Eurasian Water Milfoil” and other signs with specific invasive species messages along with old “exotic species advisory” are to be recycled.



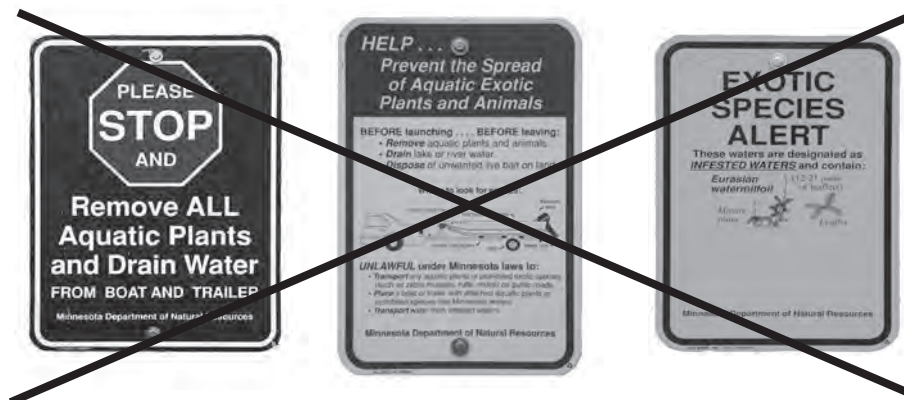
4 bullet example



Help Stop Aquatic Hitchhikers sign

The standard size, (18” x 24”) Help Stop Aquatic Hitchhikers sign, as seen to the left, are to be placed at the make ready area and tie down areas of the access. (Large signs see next page 3’ x 4’)

One, two, or three signs may be needed depending upon the layout of the access. Boaters should see the sign as they come in and before they pull out of the lot. This sign should be put on a post and not on the sign board (unless the sign board is at the prep and tie down area, or the user behavior at the access is not well defined due to lack of site development).



Obsolete signs

A larger (3'x4') Help Stop Aquatic Hitchhiker (HSAH) sign is available for use at all types (public and private) of water accesses throughout the state. This sign is from the DNR Ecological and Water Resources Division. Contact the local area DNR office for information. There are two companion signs to be placed above the large sign — one for infested waters or one for non-infested waters.

1. **This is an Infested Water** – goes above the main sign at the tie down area or exit lanes on lakes that are infested waters.
2. **Protect This Lake** – goes above the main sign at make ready areas on non-infested waters.



1
2
3

Reason for Large Sign Option:

Large signs related to AIS have been requested by stakeholders for use at DNR and non-DNR water accesses. The companion signs provide flexibility for use at either infested or uninfested waters.

At Infested Waters

Large “Help Stop Aquatic Hitchhikers” signs are desired at all high-use accesses on infested waters.

- The Invasive Species Program (ISP) will provide the signs as funding allows.
- The large signs should be posted at the exit or tie-down area as an additional sign or as a replacement for one of the 18x24 size HSAH signs.

At Non-infested Waters

- The large signs can be posted near the ramp or make-ready area as an additional sign or replacement of one of the 18x24 size HSAH sign

* If a standard HSAH sign is removed to install a large HSAH sign, the standard sign should be used at another site or returned to the DNR.

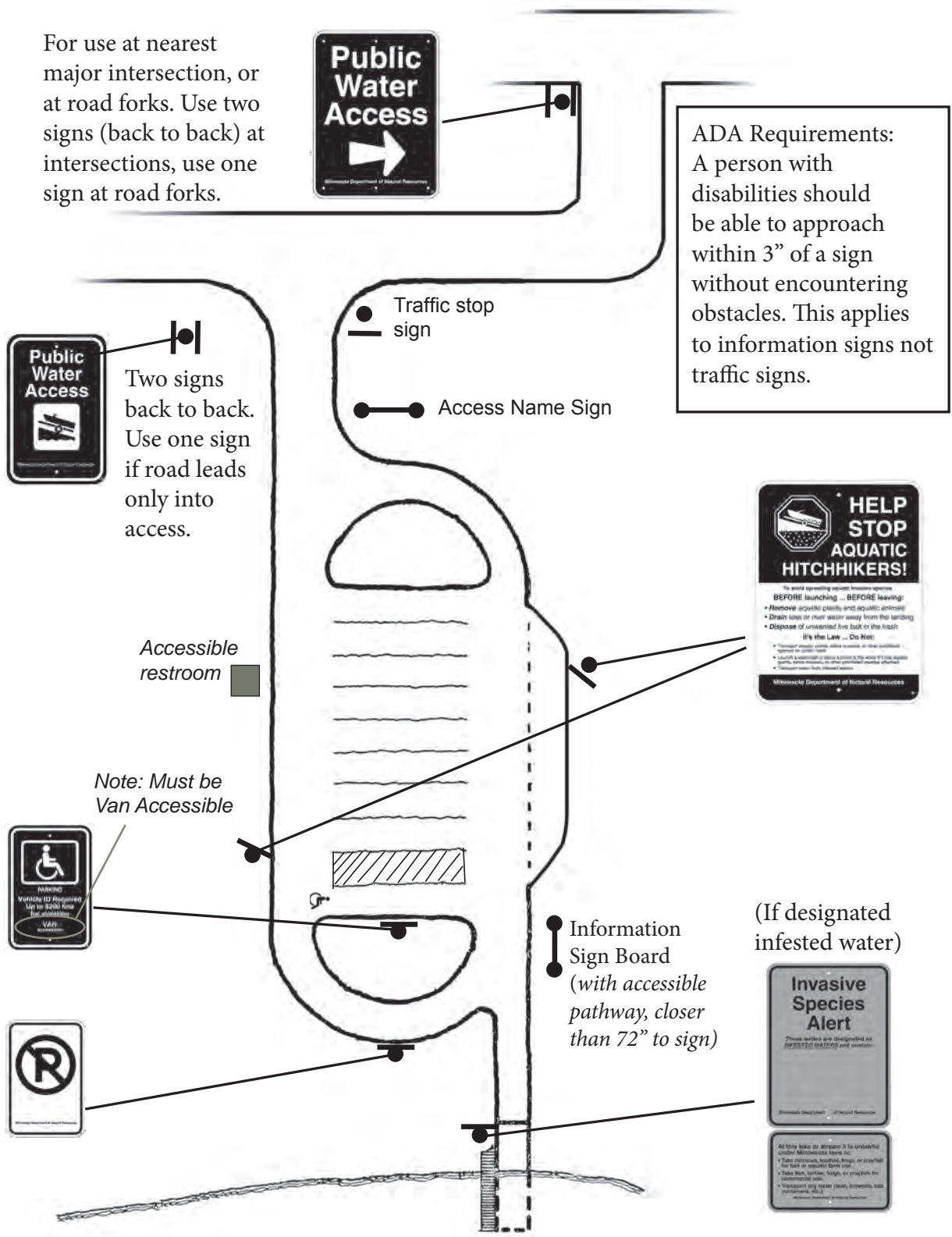
Please Be Aware!



- Gopher State One Call should be notified to mark utilities before sign posts are installed. They can be contacted at www.gopherstateonecall.org or at (800) 252-1166.
- Landowner permission is needed before any signs are posted or re-arranged.
- Some sites are designated as sensitive habitats or cultural areas

Example of a sign requiring 2 posts that is bent and looks unprofessional. Please use two posts and a wood backing to post larger signs to avoid bending of the metal.

AIS Signs- Example of Typical Site



AIS Signs- Example of High Use Site

For use at nearest major intersection, or at road forks. Use two signs (back to back) at intersections, use one sign at road forks.



ADA Requirements:
A person with disabilities should be able to approach within 3" of a sign without encountering obstacles. This applies to information signs not traffic signs.



Two signs back to back. Use one sign if road leads only into access.

Traffic stop sign

Access Name Sign



Information Sign Board



AIS Signs- Example of High Use Site Non-infested Water

For use at nearest major intersection, or at road forks. Use two signs (back to back) at intersections, use one sign at road forks.



ADA Requirements:

A person with disabilities should be able to approach within 3" of a sign without encountering obstacles. This applies to information signs not traffic signs.



Two signs back to back. Use one sign if road leads only into access.

Traffic stop sign

Access Name Sign



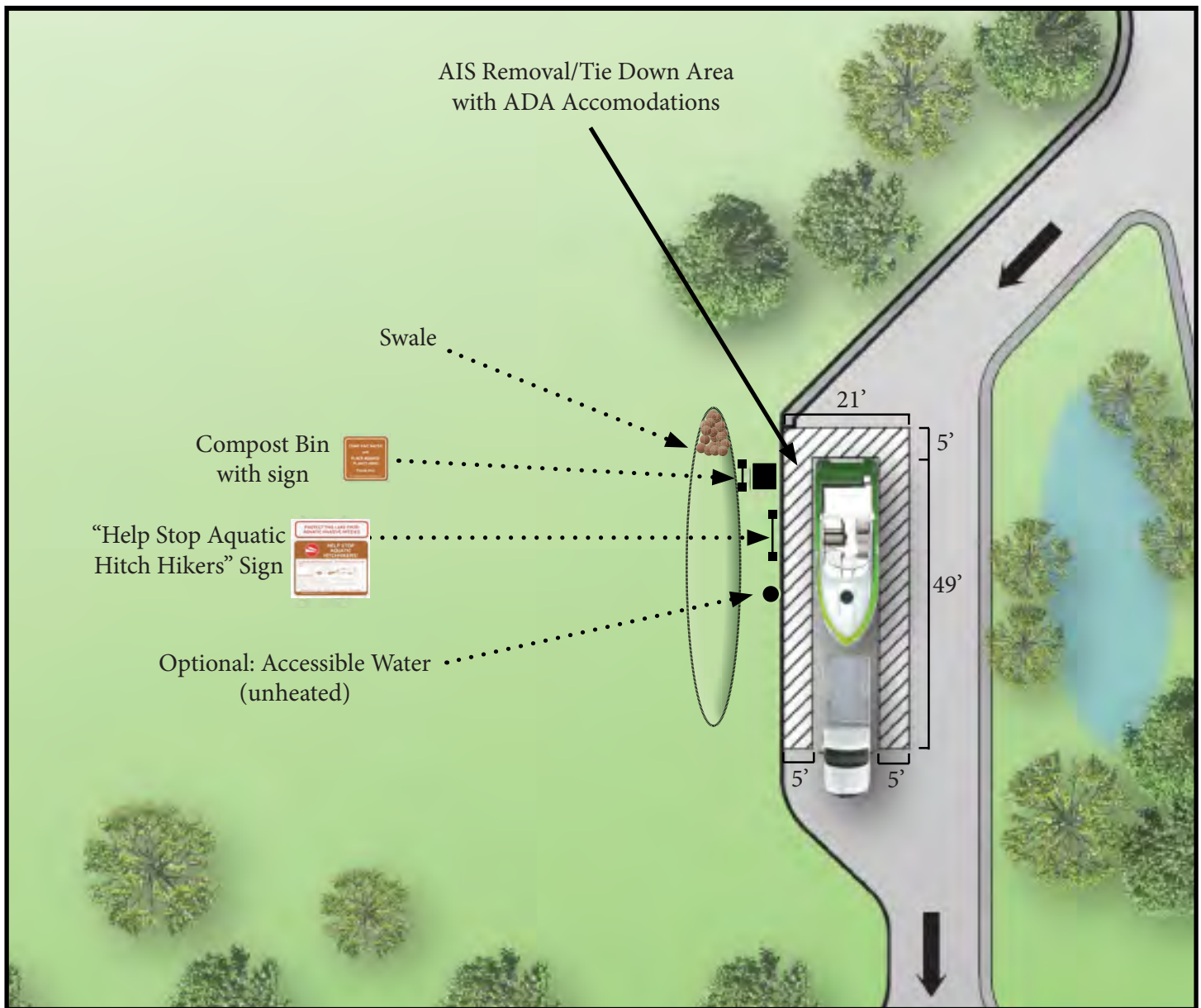
Information Sign Board



Access Site with All BMP's Added



AIS Removal Area/Tie Down Lane Messaging



AIS Activity Area and BMP Summary

No two access sites are the same. Think of the boaters that use the site and decide what would be the best way to assist them with AIS activities at the access.

- Anglers, recreational boaters, motor boats, paddles, or any combination thereof
- Established parking and pattern of flow vs. irregular parking and pattern of flow
- Infested water body vs. non-infested water body
- If infested, what species
- Proximity to infested water bodies
- Traffic patterns between infested and non-infested waters
- Overnight use of waterbody/boat camping or mooring

BMP Summary Table:

Suggested BMP's to implement by lake and access type

(Above criteria should also be considered)

	Infested Zebra Mussel	Infested High Use	Infested Low Use	Un-infested High Use	Un-infested Low Use
Define AIS Activity Area	Yes	Yes	Yes	Yes	Potentially
Compost Bin	Yes	Yes	Yes	If feasible	Potentially
Water Source	If feasible	Yes	No	No	No
Surface Water Management	Yes	Yes	Yes	Yes	Potentially
Improved Messaging	Yes	Yes	Yes	Yes	Yes

APPENDIX

A.....Boat Decontamination Units

B.....Boater Activity Guide

C.....Aquatic Plant Removal Tool

D.....AIS Prevention Ideas for Access Providers

E.....Compost Bin Plans

F.....Stormwater Management

G.....Contacts

Appendix A:

Decontamination Unit (High Pressure/Hot Water)

“Decontamination” is a general terms for the use of hot water at high pressure to spray the exterior of boats, rinse the interior (live wells and bilges), and water related equipment. It is a two-step process: first hot water (approximately 140 degrees Fahrenheit) is applied to an attached adult Zebra Mussel for 10 seconds to kill it. High pressure (typically 3,000 PSI) water is then used to remove attached Zebra Mussels as well as other aquatic plants and animals. It is necessary to set the machine at 160° to get 140° water on the boat’s surface.

Decontamination units are not an official part of the BMP recommendations for access sites because the “decontamination” of boats with hot, high-pressured water is not required by state law. Decontamination units are often proposed because decontamination is one of the recommended actions in the boaters AIS checklist.

Providing a decontamination unit sounds simple, however, there are some major concerns with providing them. The DNR has recently purchased a few portable units that will be staffed by certified Level II Inspectors and moved around the state. The DNR is also willing to consider a few permanent decontamination units as pilot projects so that more information on the feasibility and effectiveness of decontamination units can be studied.

Considerations before investing in a Decontamination Unit:

There are numerous factors to consider when setting up portable or permanent decontamination units:

1. At this time, the law does not require all boats or water related equipment to be “decontaminated”. Washing is a voluntary option unless the DNR has an Authorized Inspector or Conservation Officer present to determine that decontamination as needed.
2. If placing at or near a water access, sufficient space is needed so that traffic flow in and around the launch ramp and parking area is not impeded.
3. A plan for properly capturing and treating the run-off water must be in place. The Minnesota Pollution Control Agency considers the water to be wastewater. Discharge of vehicle wastewater to the ground could result in contaminating the groundwater due to the amount of oil, chemicals, excess phosphorous, and toxic metals present on vehicles, trailers, tires, and engines.
 - a. Reclamation mats and water capture systems should be used whenever possible. The system will capture and filter the water so that it can be reused or drained into a municipal system.
 - b. Connection to a municipal sewer system (permits required). It is important to note that filters should used to collect Zebra Mussels and veligers.
4. A water source is needed for permanent units, preferably a municipal water system.
5. An electrical source is needed for permanent units. A certified electrician should be used for design, construction, and maintenance of electrical components.
6. Trained staff supplied with proper safety equipment are needed to operate both portable and permanent units. Burns, slips, trips, or damage to equipment could occur if not used properly.
7. Regular maintenance will be needed on portable and permanent units to keep them operational. There must be the ability to easily winterize equipment for storage in overnight temperatures below freezing.
8. Vandalism is common at water access sites, prevention measures should be considered.

9. Insurance liability coverage in case there is damaged equipment and/or injuries (state requirements must be met on state lands).
10. Only the land owner/access administrator can approve of the installation and/or use of a decontamination unit.

Site Specific Considerations:

The safety of the visitors using access site and of those operating the decontamination unit are of utmost importance. Careful thought should be put into the location and set up of the decontamination unit, keeping in mind a safety perimeter should be left around the unit so that the operator has room to walk around all sides of the boat being washed.

Adequate maneuvering room: Traffic flow at the access should not be adversely affected. The location of the decontamination unit and water reclamation mat should not completely block any of the main aisles, the make ready area, the tie down/AIS activity area or launch ramp. Traffic not waiting for or using the decontamination unit should be able to drive around.

Parking Spaces: At most access sites, especially on weekends and holidays, parking spaces are the most valuable commodity. Setting up the decontamination unit in one or more parking spaces should be the last resort.

Preferable Locations (will vary by site):

1. Entrance/Exit Roads that lead into or out of the access parking area. Steep slopes, sharp curves higher road speeds, or narrow lanes may create unsafe situations.
2. Public or private land adjacent to the access site. Access sites are often near parks or other publically owned lands, alleys or dead end streets, privately owned businesses, and seasonal residents. Ask for adjacent landowners' permission.
3. Medians/green space in the center of the parking area and/or shoulder/buffers strips on the edges of the parking area should be considered. Getting the tow vehicle and decontamination unit trailer off the parking lot and onto the vegetation is ideal. The reclamation mat can be placed on the drive lanes or parking space(s) nearby if necessary for better operator access.
4. Parking spaces and/or overflow parking areas can be used if there is no option for 1, 2, or 3. Placing the reclamation mat where boaters can pull through going forward is necessary. If boater must back out the operator of the decontamination unit should provide safety and direction to the operator of the vehicle.

Costs:

- Portable units including a water recapture system are \$12,000 to \$20,000 per unit. The cost of a permanent decontamination unit will depend upon many variables at the access site especially the availability of water and electric, the containment of the wastewater and the type of unit. The DNR estimates costs of design, construction, and all components of a boat wash system would range from \$30,000 to \$200,000.

Benefits:

- Decontaminating boats as they leave infested waters is an additional measure that will help prevent the spread of Zebra Mussels and aquatic organisms



Portable boat decontamination unit and mat

Concerns:

- High cost: expensive to buy, design, operate, and maintain
- Facility could take up a large amount of space (which is often at a premium at a water access)
- Boaters are often in a hurry at accesses and may be unwilling to have their boat washed unless it is required by an authorized inspector
- May deter boaters from using a particular access or route in order to avoid decontamination units, and it could cause back-ups and traffic flow problems at already busy and crowded access sites
- Decontamination units may disturb neighbors with additional sights and sounds. The type of unit, placement at the site, and hours of use should be carefully considered.

Powerwashing and Vessel Wash Wastewater

Vessel wash wastewater, due to the activity of powerwashing, can carry various particulates including: dissolved metals, paint chips, organic materials, oils, and other chemicals. Furthermore, releasing of water onsite may induce erosion and release water with high sediment loads. The U.S. Environmental Protection Agency is in the process of administering state assessments and addressing the discharge of vessel wash wastewater nationwide.

To manage vessel wash wastewater for mobile onsite decontamination units, these are the following requirements:

- A reclamation mat that is impervious and temporary
- The reclamation mat should be large enough for the boat and major overspray
- The reclamation mat and/or decontamination unit system contains and directs the wastewater into a sump pump and back into the decontamination unit tank
- Disposal of water offsite from the public water access site. Required disposal methods include water collection into decontamination unit tanks and water treatment through filtering to remove solids and contaminants with transport to and disposal into city sewer
- Evidence of gas/petroleum sheen or odor during the use of mobile decontamination unit would require immediate transport and disposal of water offsite according to the required water disposal methods

Appendix B:

Boater Activity Guide

When at a public access, motor boat users follow a very detail-oriented, yet quick process to successfully launch/load their boats without causing conflicts with other users. Procedures to comply with AIS laws are integrated with activities.

Courtesy on the Boat Ramp

Courtesy at a boat ramp can go a long way in making everyone's day on the water enjoyable. Space is very limited at most sites and there is the possibility that a boater will be required to find another facility to use.

- The boat ramp and parking area is first come, first served.
- There may be a line on land and in the water as boats are putting in and coming out. The line on land determines the order of boats at the ramp/dock.
- Prepare your boat while away from the ramp.
- Non-boaters using the public access for angling, swimming (when allowed), dog training, or other water recreation activities must yield to the boaters using the ramp or dock. Reel in lines, move self and equipment off dock or ramp, and maintain control of animals and children.



Clear Lake public access

Bring extra water if using minnows or leeches to complete a water exchange before leaving to transport live bait.

Pre-Launch Preparations

Prepare your boat while at the make ready area. Take your time, be calm, and mentally go over everything you need to do before putting the boat in the water. This includes:

- Inspect your boat trailer and equipment for plants, animals, mud and water. Remove if found.
- Install your drain plug.
- Load all equipment from the vehicle to the boat. This includes fishing gear, coolers, life jackets, and anything you will use that needs to be loaded onto the boat prior to the boat getting on the ramp.
- Remove the tie-downs that secure the boat to the trailer. Do not remove the winch line from the bow eye.
- Unplug your trailer lights if they are not sealed and waterproof.
- Place fenders.
- Ready dock lines.
- Turn on battery switch.
- Pump the fuel primer bulb if you have one.
- Put the key in the ignition and check the battery.
- Once you are 100% ready, get your vehicle in line to use the ramp.

Launching

Your time on the ramp should be only a few minutes. If you experience problems, ask for help. If you are not experienced towing and backing a boat, practice during off-peak hours before going to a busy ramp.



Loading a boat on an access

If launching with more than one person:

- Put one person in the boat and one in the vehicle.
- Carefully back the boat into the water.
- The person in the boat unhooks the winch line from the bow eye and drives the boat off the trailer.
- The person in the boat should operate the boat away from the ramp and dock.
- The person in the tow vehicle should drive off the ramp to a parking space.
- The person in the boat returns to the dock to pick up the tow vehicle driver.

If launching with only one person (or with people that are not licensed to drive a motor vehicle):

- Attach the bow or docking line to the trailer or vehicle. This will keep the boat from floating away if the trailer is backed in too far.
- Carefully back the boat into the water.
- Unhook the winch line from the bow eye. Move the boat to the dock or shoreline (guide with bow line or climb aboard to operate boat) and secure.
- Move vehicle to a parking stall.

Loading

The line is formed by vehicles with trailers, not by vessels in the water.

- When loading with a partner, one person drives the boat up to the dock and drops off the vehicle driver. The boat driver then backs the boat away from the dock and waits for the driver to return with the vehicle. Only tie up to a dock if you are alone or with companions that are not licensed to drive a motor vehicle.
- When the vehicle arrives, the driver backs the trailer into the water and the boat driver gently drives the boat onto the trailer. Do not throttle above idle speed to move the boat farther up the trailer, this washes out the launch ramp.
- When the boat is on the trailer, the boat driver connects the winch strap and winches the boat the rest of the way up the trailer.
- The vehicle driver can also back in a little bit farther if needed to make cranking the boat up easier.
- When boat is all the way up and onto the trailer the vehicle driver can pull the boat out of the water and drive away from the ramp to the AIS Activity area/tie down lane. (Do not just pull up a few feet onto the ramp with the boat out of the water; this can create a back up to launch and load.)

Complete the Invasive Species Checklist:

- **CLEAN** your boat, trailer, and equipment.
- **REMOVE** aquatic plants, animals, and mud before leaving the water access.
- **DRAIN** water from your boat, motor, bilge, live wells, and bait containers before leaving the water access.
- **DUMP BAIT WATER** of unwanted bait as well as aquatic plants and animals

Loading Continued...

- Remove the key from the ignition
- Turn off equipment and battery switch
- Remove dock lines and fenders
- Plug in and check trailer lights
- Attach tie downs that secure boat to the trailer
- Load equipment from boat to vehicle
- Before using another water body, clean boat, and recreational equipment to remove or kill species that were not visible when leaving a waterbody
- SPRAY/RINSE with water, especially if moored for more than two days and/or DRY for at least five days
- Courtesy and boat ramp etiquette are the responsibility of everyone who uses the numerous ramps on Minnesota's waterways



Extra supply of water for bait bucket



Dumping bait water into compost bin



Exchanging bait water

Use compost bins to dump bait water/bait and/or exchange bait water. Preparation for the day includes extra water to use for exchanging bait water.

Additional Steps Are Recommended for the Following Activities:

Shore and fly-fishing

- Remove aquatic plants, animals, and mud from waders and hip boots.
- Drain water from bait containers.

Personal watercraft

- Avoid running engine through aquatic plants.
- Run engine for 5-10 seconds on the trailer to blow out excess water and vegetation from internal drive, then turn off engine.
- Remove aquatic plants and animals from water intake grate, steering nozzle, watercraft hull, and trailer.

Sailing

- Remove aquatic plants and animals from hull, centerboard or bilgeboard wells, rudderpost area, and trailer.

Scuba diving

- Remove aquatic plants, animals, and mud from equipment.
- Drain water from buoyancy compensator (bc), regulator, tank boot, and other containers.
- Rinse suit and inside of bc with hot water.

Waterfowl hunting

- Remove aquatic plants, animals, and mud from boat, motor, trailer, waders or hip boots, decoy lines, and anchors (elliptical and bulb-shaped anchors can help reduce snagging aquatic plants).
- Cut cattails or other plants above the waterline when they are used for camouflage or blinds.



MN DNR "Stop Aquatic Hitchhiker" sign

Appendix C:

Aquatic Plant Removal Tool

For many boaters, reaching or crawling under their boat to remove aquatic vegetation is quite difficult. Having a tool available that can reach underneath the boat trailer could improve AIS efforts for many boaters. This homemade version is less expensive than traditional litter picking tools which can cost anywhere from \$15 to \$40. This idea is in the appendix because it is not a modification to access sites but a potential accessory.

The tools could be supplied in combination with the compost bins at access sites. It would especially be helpful at sites on lakes infested with Eurasian Water Milfoil and Curly Leaf Pondweed. These sites will naturally have a higher rate of vegetation removal from boats and trailers and other water-related equipment.

The aquatic plant removal tool will probably be more successful if it belongs to individual boaters rather than be a part of the AIS activity area. It has potential to be a future promotional item that could be given away at boating events or individuals could be encouraged to buy and build the tool themselves.



Aquatic plant removal tool in use



Aquatic plant removal tool in use

Tool Design

A 5/8 inch x 4' dowel is recommended for the handle. A rubber coated screw in hook is recommended for the end. The benefits of this design are:

- Inexpensive (less than \$5 for parts).
- Easy to make yourself, or mass build and give away.
- Rubber coated hook (with wood screw end) will not scratch boats and equipment.
- The 5/8 inch diameter dowel makes it lightweight yet durable.
- Pre-drill the hole for the hook.
- Able to attach message decal or mark lengths on the dowel so it can double as a fish ruler.

Benefits

- Provides a way to reach under your boat and trailer to remove aquatic vegetation
- Best for lakes with vegetation issues, Eurasian Water Milfoil and Curly Leaf Pondweed
- Inexpensive, materials cost estimated at \$5
- Can be kept in the boat or in the back of your vehicle
- Message decals can be placed on the dowel, especially AIS messages and sponsor information for free giveaways at public awareness events

Concerns

- If left unattended at access sites, it could be misused or stolen

Recommendations

The usefulness of this tool to each boater will vary based on the type of boat and style of boat trailer, and possibly age and physical ability of people in the boat. Vegetation removal is a great job for kids. Teach your kids this is part of the routine. The tool will supplement plant removal efforts and will work well in combination with the compost bins.



Aquatic plant removal tool in use

MATERIALS

- 1 - 4' hardwood dowel rod 5/8" thick
- 1 - vinyl coated metal plant hook with shape screw
- 1 - catch and release vinyl application with Department of Natural Resources logo
- Wood Glue
- Optional - lanyard

DETAILS

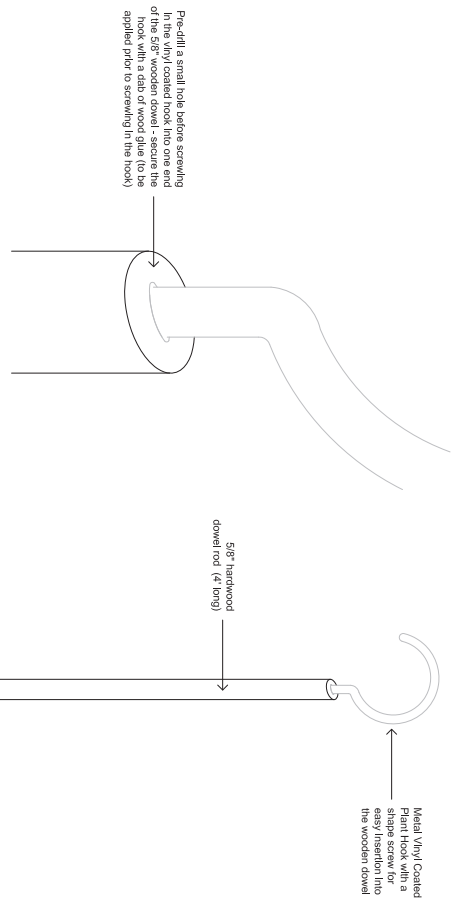
Pre-drill a small hole in one end to aid in the attachment of the vinyl coated metal plant hook

Place a small dab of wood glue into the hole prior to screwing in the plant hook

Screw the plant hook into the wood until the vinyl covered portion is flush with the end of the dowel

Adhere the vinyl Catch and Release Information directly to the wooden dowel

If desired attach optional lanyard to the end opposite the plant hook



drawn by Justin Wood



SCALE IN FEET



HERBERT CENTER FOR THE PALEONTOLOGICAL RESEARCH
AND THE FIELD COLLECTIONS AND RESEARCH CENTER
UNDER THE LANS OF THE STATE OF MINNESOTA

Name: _____
Date: 5/3/2011

Management Resources

State: _____
Equipment: _____
Information Management: _____

DNR Division of Sponsoring Division

Pull Tool

for Aquatic Invasive Species

County: _____ State: _____ Township: _____ Range: _____ Near City: _____

Revisions

Date	By	Description
01/01/11	JL	
05/03/11	JL	

The Vinyl Coated Pull Tool

State	District	County	Section	Range	Township
XX	0000	XX	0000	XX	0000
XX	0000	XX	0000	XX	0000
XX	0000	XX	0000	XX	0000

L1

Log Number: X-###-###-###
In Number: XXX-###-###-###

Appendix D: AIS Prevention Ideas for Access Providers

Tasks of concern involve the repair, removal and installation of:

1. Fishing Piers
2. Boarding Docks
3. Launch Ramps
4. Buoys
5. Boat Lifts
6. Swim Rafts
7. Bait and Fish Traps
8. Bait and Fish Containers

Equipment affected:

Vehicles, boats, trailers, backhoes, tractors, excavators, lifting clamps, chains, hand tools, boots and waders, boarding docks, and fishing piers if being moved to a new site, fishing pier components (esp. floats which hold water), silt curtains, etc

Equipment needed:

Portable air compressor, brushes, towels

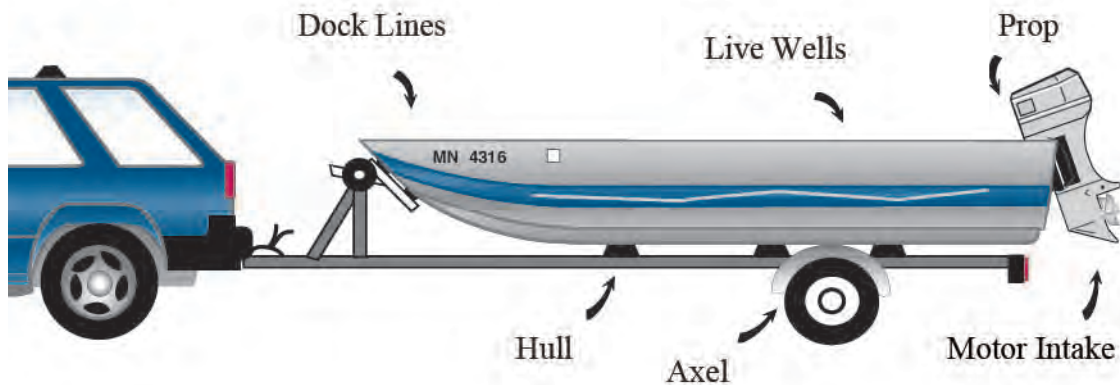
- The highest risk of spreading AIS is directly related to the movement of plants, animals, earth, and water on equipment.
- Take time to discuss operational procedures and expectations specific to your work area and equipment. Pay attention to areas that may hold water or debris. Share with others the methods that work best.
- Please encourage all staff and partners to be aware of these recommendations:
 1. Visually inspect all equipment to be used on site before leaving work station and before moving to another site. Remove all seeds, plants, and soil with a brush or compressed air. Remove standing water with a towel.
 2. Rental or partner equipment should be inspected before arriving on site or unloaded. If it is not clean, send it to get cleaned, preferably away from the site at a maintenance building.
 3. Power spray, thoroughly clean, and dry equipment at the end of the day so that it is ready for the next day.
 4. As a rule of thumb, treat every water body like it could be infested. Use common sense when planning the sequence of site visits for the day and complete the work on uninfested sites first.
 5. Educate volunteers, contractors, partners, and all staff on the above recommendations and stipulate adherence in everyday work behaviors.

**It is your personal responsibility to
ensure that all equipment is clean in,
clean out!**

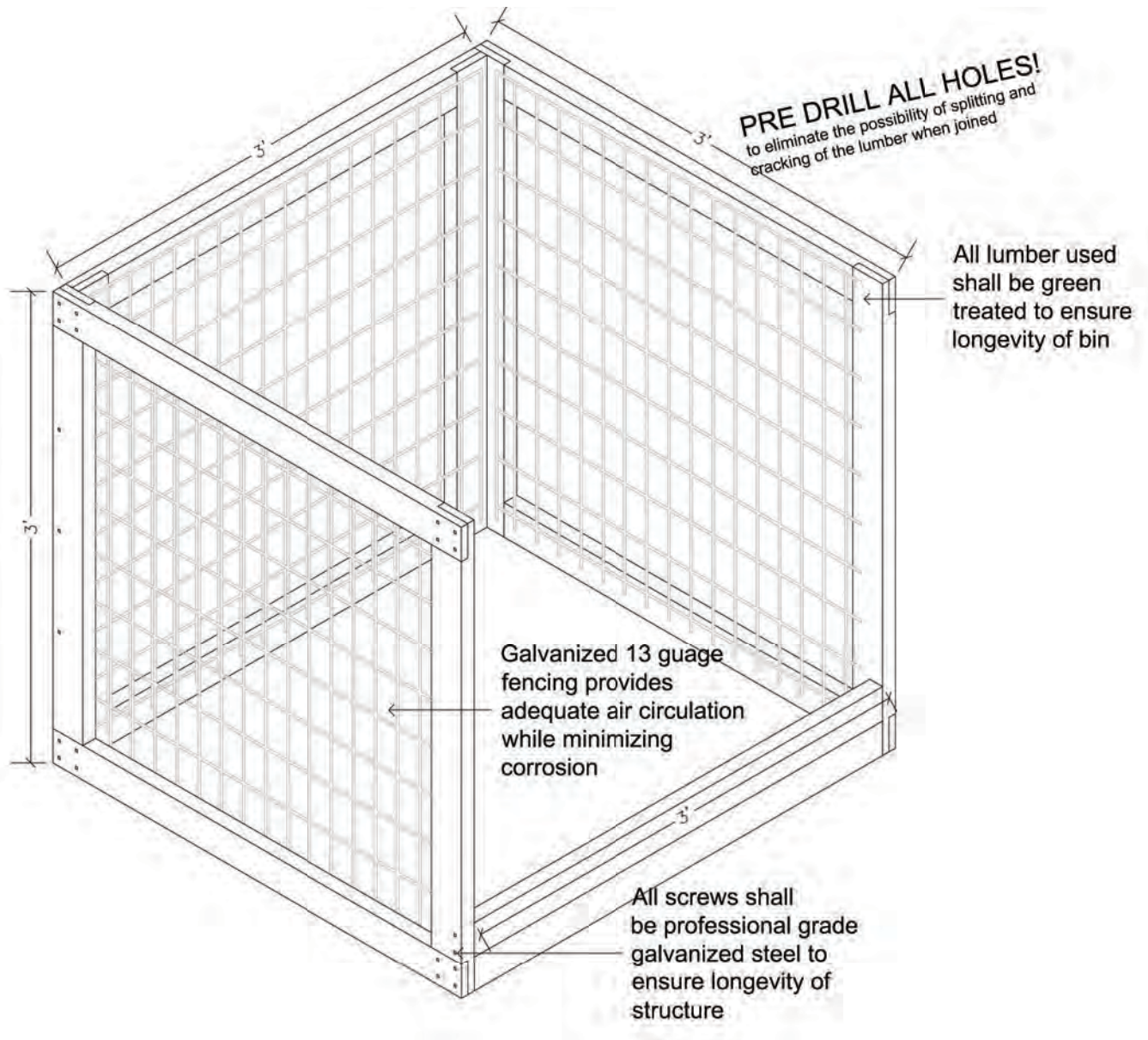
Recommendations to remove or render AIS non-viable

Species	Removal Methods	Drying Period	Wash Temp	Other
Aquatic Plants	Hand pick fragments from equipment. Power spray to remove mud and seeds.	10 days	140 F	Freeze for 1 week
Aquatic Animals	Inspect, power spray or scrape to remove.	Dry 4 days in temps over 65 F. Drying not recommended in cool, wet weather. It is not effective in these conditions.	104 F/4 min 120 F/1 min 140 F/5 sec	Freeze for 2 days

Inspect Everything!



Appendix E: Compost Bin Construction Plans



Materials

- Five- 12 foot green treated 2x4
- 50+ - 1 1/2" professional grade galvanized screws
- 14+ - 4" professional grade galvanized screws
- 150in + x 48 in galvanized wire mesh fencing - 13 gauge minimum, 2x4 mesh size
- 160+ - Heavy Duty 3/8" Staples

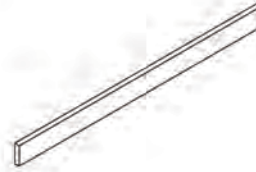
Compost Bin Construction Plans

A.



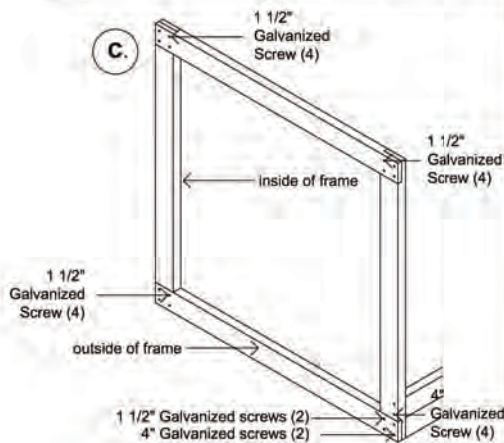
Cut three of the 12 foot 2x4 into two 4 foot long pieces, then cut a 3/4" deep and 3 1/2" wide section out of each end for a total of 24 lap cuts

B.



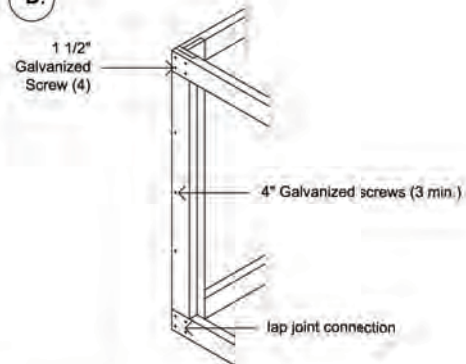
Next, cut the remaining 8 foot 2x3 into two 4 foot long pieces - these will be positioned in the front of the bin to provide structural support for the cube shape

C.



Join each lap cut board with one another using four 1 1/2" galvanized screws for a total of three 4' square frames (*Ensure that the two boards with the grooves face on another allowing the removable boards to be slid into the panels*)

D.



Next, join the 4' square frames with one another using three 4" galvanized screws - using more if necessary to provide desired stability. Finally, cut the 13 gauge fencing to size and staple to the inside of each panel every two inches on center

Details

Compost bin shall be placed directly onto the ground for optimal efficiency, but may be placed on a concrete/aggregate surface if desired.

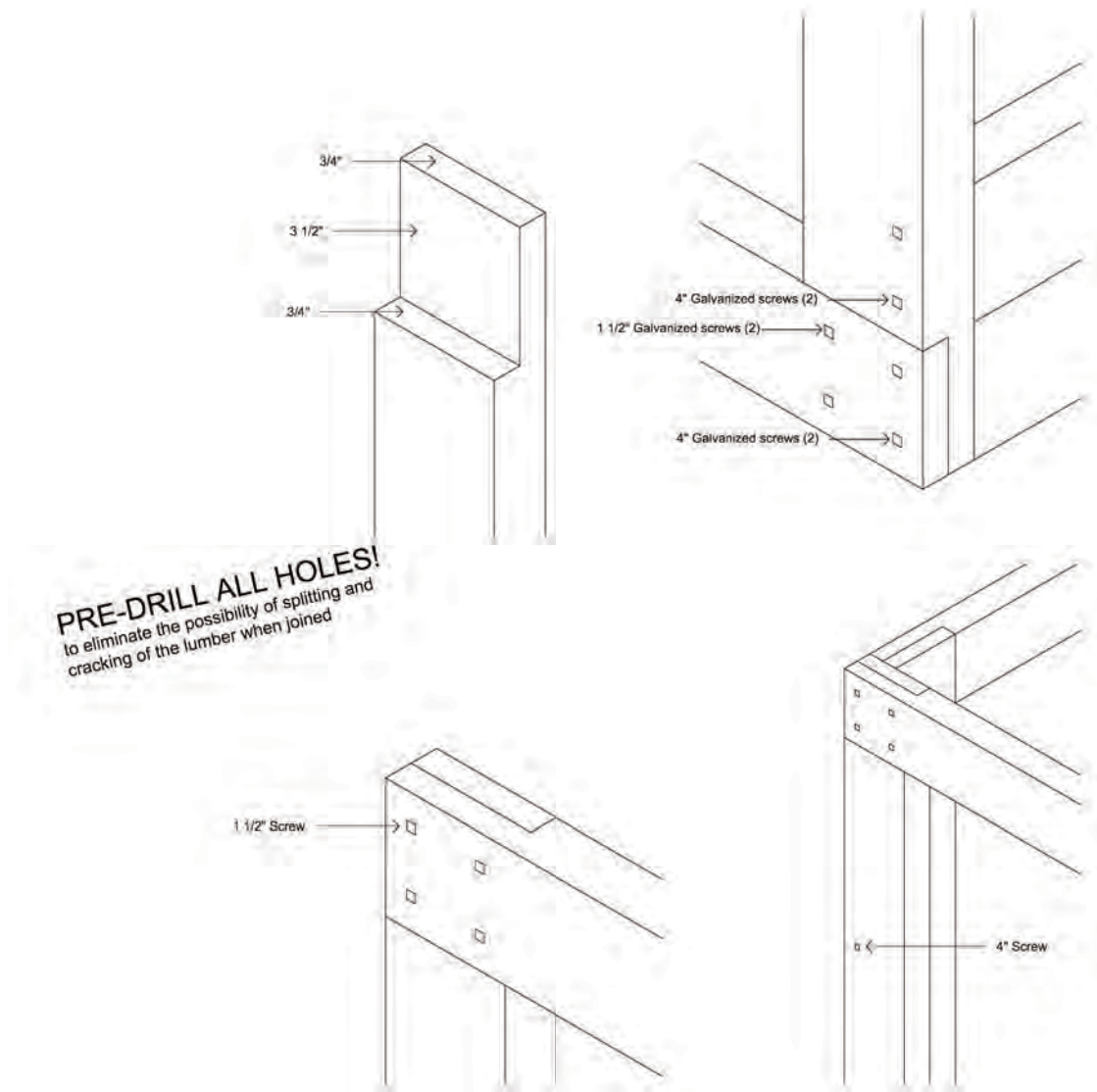
There shall be an ADA accessible path leading up to the compost bin.

All lumber shall be green treated to provide optimal longevity of the structure.

All screws shall be of professional grade galvanized steel to provide optimal longevity of the structure.

All connection holes shall be pre-drilled to minimize cracking and splitting of lumber as boards are joined.

Compost Bin Construction Plans



Suggestions

Attach the bin to the sign post that holds the sign. This will help anchor it and make it harder for someone to steal.

Additional anchors may be needed.

Appendix F: Stormwater References

The Minnesota Pollution Control Agency has developed a manual entitled *Protecting Water Quality in Urban Areas*. The manual addresses an array of Stormwater Best Management Practices.

www.pca.state.mn.us/water/pubs/sw-bmpmanual.html

Available through the Metropolitan Council, The Urban Small Sites Best Management Practices (BMPs) provides detailed information on BMP's aimed at managing stormwater pollution for small urban sites in cold-climate settings.

www.metrocouncil.org/environment/watershed/bmp/manual.htm

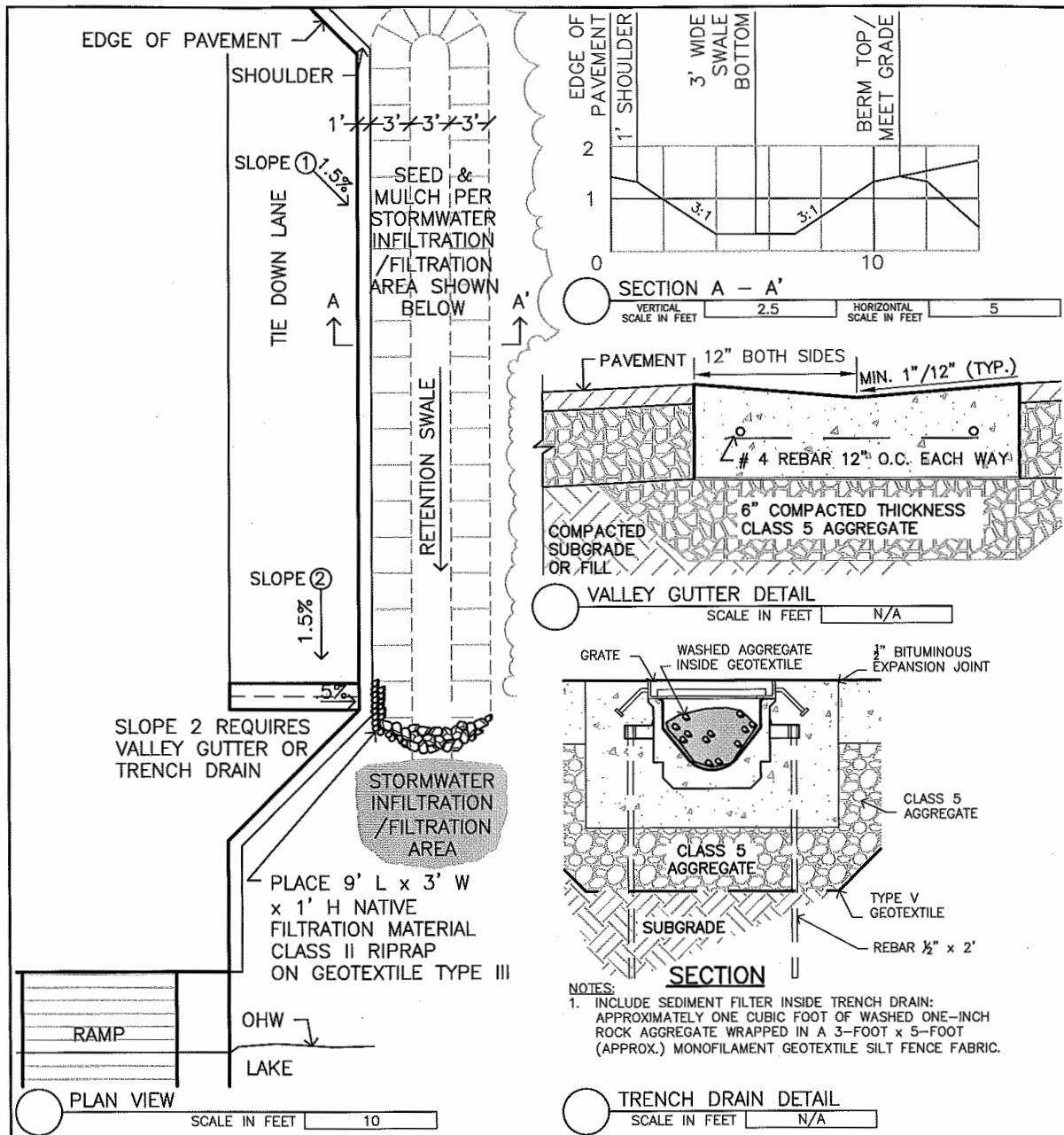
The Minnesota Stormwater Manual is an in-depth, all encompassing manual that is revised every two years and is a great tool for engineers and landscape architects.

<http://www.pca.state.mn.us/index.php/water/water-types-and-programs/stormwater/stormwater-management/minnesota-s-stormwater-manual.html>

The Board of Soil and Water Resources provides Native Vegetation Establishment and Enhancement Guidelines that recommend diversity levels, native varieties and seed mixtures.

http://www.bwsr.state.mn.us/native_vegetation/seeding_guidelines.pdf

Example Storm Water Design Plan



MINNESOTA DEPARTMENT OF NATURAL RESOURCES					
	MRG		DIVISION OF PARKS AND TRAILS		
	Designer	LA	INVASIVE SPECIES FILTRATION CATCHMENT		
	Drawn	LA			
	Checked	JP			
	Date	11/24/10			
Revision					
	Section	Township	North	Range	West
	Req.	File			

SDG

Contacts

Nancy Stewart

Public Water Access Program Coordinator
Email: Nancy.Stewart@state.mn.us
Phone: 651-259-5616

John Steward

Region 1- Assistant Area Supervisor
Email: John.Steward@state.mn.us
Phone: 218-308-2366

Dave Olfelt

Region 2- Strategic Program Manager
Email: Dave.Olfelt@state.mn.us
Phone: 218-999-7945

Tim Edgeton

Region 3- Area Supervisor
Email: Tim.Edgeton@state.mn.us
Phone: 320-255-4279 x229

Gregg Soupir

Region 4- District Supervisor
Email: Gregg.Soupir@state.mn.us
Phone: 320-796-2161 x229

Steve Hennessy

Region 4- Acq. and Development Specialist
Email: Steve.Hennessy@state.mn.us
Phone: 507-333-2056

We want your photos!

Send your local DNR contact before and after photos of your improved access AIS activity area.

Casey Nelson

Acq. and Regulatory Coordinator
Email: Casey.Nelson@state.mn.us
Phone: 651-259-5629

Les Fronning

Region 1- Technician
Email: Leslie.Fronning@state.mn.us
Phone: 218-739-7576 x234

Sam Johnson

Region 2- Assistant Area Supervisor
Email: Sam.Johnson@state.mn.us
Phone: 218-999-7921

Trygve Hanson

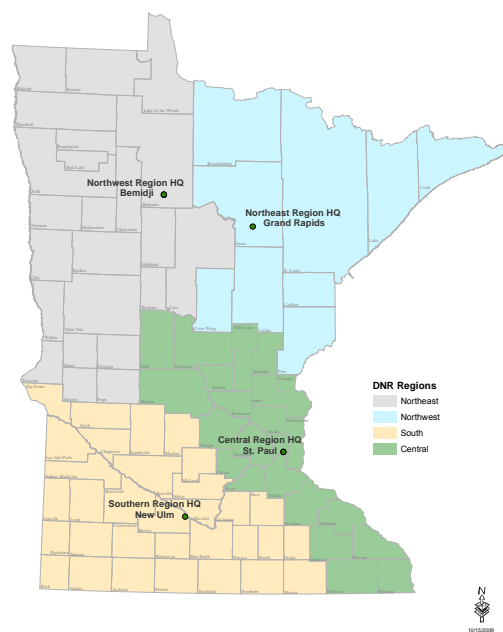
Region 3- Acq. and Development Specialist
Email: Trygve.Hanson@state.mn.us
Phone: 320-255-4279 x228

Phil Nasby

Region 4- Area Supervisor
Email: Phil.Nasby@state.mn.us
Phone: 507-831-2900 x225

Minnesota Department of Natural Resources

DNR Administrative Regions



Boat Clean and Drain Area Implementation

Components of the clean and drain areas are being installed across the state at boat access sites. Additions to sites include compost bins, signs, pavement stencils, and expanded areas for safely completing watercraft inspections and decontaminations.



Compost bin with a sign: used for aquatic plants, animals, unwanted minnows and leeches, and bait bucket water. These bins are not for garbage or worms.





Painting the pavement stencil (left),
and the finished stencil (below).

Completed boat clean and drain area
Mississippi River-Hastings, MN



An example of an expanded tie down area that can be used for watercraft inspections or decontaminations to minimize traffic flow disruption at the site, as well as for additional safety.

Components of a boat clean-and-drain area

mndnr.gov/invasives/water_access.html

